

**SUPPORT**  
PHOTOVOLTAIC  
Professional solution provider





Professional Solar Mounting  
Solution Provider

|   |       |           |
|---|-------|-----------|
| <b>Company Profile</b>                              | ----- | <b>01</b> |
| <b>Ground System GT1</b>                            | ----- | <b>03</b> |
| <b>Ground System GT2</b>                            | ----- | <b>05</b> |
| <b>Ground System GT3</b>                            | ----- | <b>07</b> |
| <b>Ground System GT4</b>                            | ----- | <b>09</b> |
| <b>Solar Carport ASC01</b>                          | ----- | <b>11</b> |
| <b>Ballasted Solution BR2</b>                       | ----- | <b>13</b> |
| <b>Ballasted Solution BR4</b>                       | ----- | <b>15</b> |
| <b>Ballasted Solution BR6</b>                       | ----- | <b>17</b> |
| <b>Triangle System AR1</b>                          | ----- | <b>19</b> |
| <b>Triangle System AR2</b>                          | ----- | <b>21</b> |
| <b>Trapizoidal Roof Mount TR01</b>                  | ----- | <b>23</b> |
| <b>Standing Seam Roof Mount SS01</b>                | ----- | <b>25</b> |
| <b>Tile Roof Mounting TH01</b>                      | ----- | <b>27</b> |
| <b>Asphalt Roof Mount AF01</b>                      | ----- | <b>29</b> |
| <b>Standard Component</b> Long Rail & Splice        | ----- | <b>31</b> |
| <b>Standard Component</b> Short Rail & Ground Screw | ----- | <b>33</b> |
| <b>Standard Component</b> Inter & End Clamp         | ----- | <b>35</b> |
| <b>Standard Component</b> Inter & End Clamp & Nut   | ----- | <b>37</b> |
| <b>Standard Component</b> Fastening & L Feet        | ----- | <b>39</b> |
| <b>Standard Component</b> Grounding Component       | ----- | <b>41</b> |
| <b>Standard Component</b> Other & Cases             | ----- | <b>43</b> |

# COMPANY PROFILE



## ▶ ABOUT US

HQ Mount located in Xiamen, China, is specialized in researching and developing, manufacturing, selling solar mounting system solutions. Our products include roof mount, ground mount, solar carport, solar farm and all mounting accessories.

## ▶ CORPORATE CULTURE



Corporate Culture

People Oriented  
Innovation  
High Efficiency



Corporate Vision

Strive to be the best solar mounting solution provider  
Promote the development of clean energy



Corporate Mission

Focus on customer's requirement  
Provide the competitive solar mounting solutions  
Sustained to create maximum value for customers

## ▶ ENTERPRISE HONOR



## ▶ COMPANY



## ▶ STORAGE



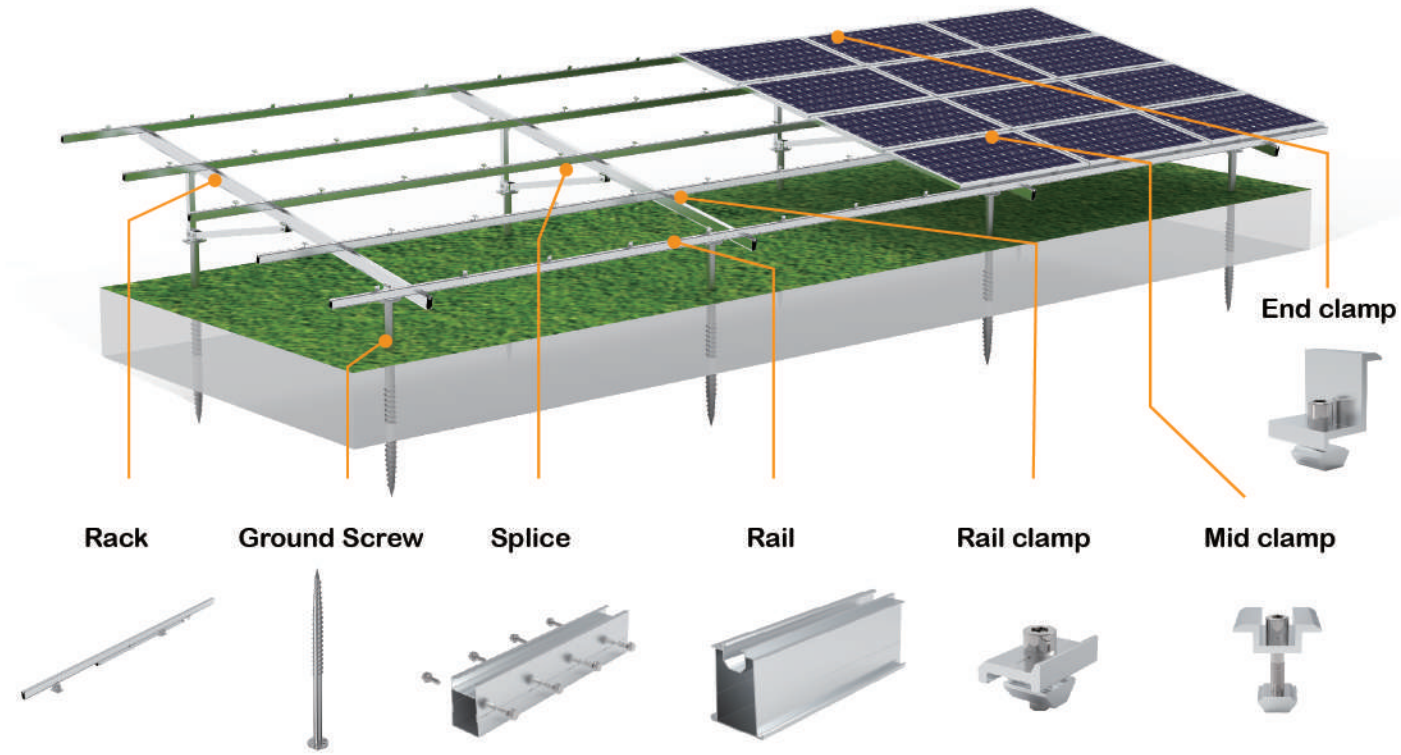
## ▶ MACHINING



## ▶ QUALITY CONTROL

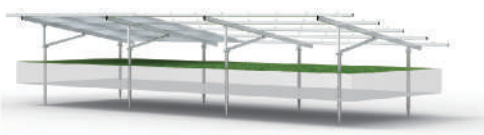


# HQ-GT1



## INTRODUCTION

HQ-GT1 is an aluminum pre-assembled ground rack system.



|                   |  |
|-------------------|--|
| Tilt angle        | 0-60°                                      |
| Wind speed        | 0-80m/s                                    |
| Snow load         | 0-150cm                                    |
| Design standard   | AS/NZS1170, JIS C 8955: 2011/2017, DIN1055 |
| Material          | AL6005-T5&SS304                            |
| Installation site | Ground open field                          |

## ADVANTAGE

|                                  |                                    |                               |                      |                         |                               |                              |
|----------------------------------|------------------------------------|-------------------------------|----------------------|-------------------------|-------------------------------|------------------------------|
|                                  |                                    |                               |                      |                         |                               |                              |
| Cost effective 25 Years lifetime | Light Structure, Easier to install | 12µm Anodized, Anti-corrosion | East-west adjustable | Pre-assemble, save time | ANW, all environment suitable | Suitable for framless panels |

## INSTALLATION



1 Ground screw installation



2 Unfold pre-assemble rack



3 Fix pre-assemble rack above screws



4 Install rails as drawing



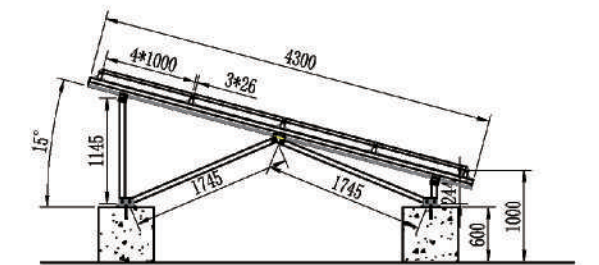
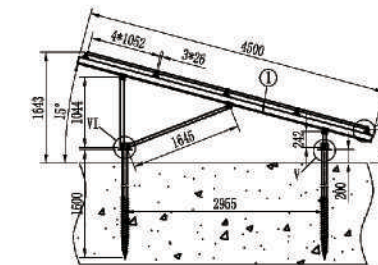
5 Fixing solar panel with mounting clamps



6 The installation is completed

## DESIGN DRAWINGS

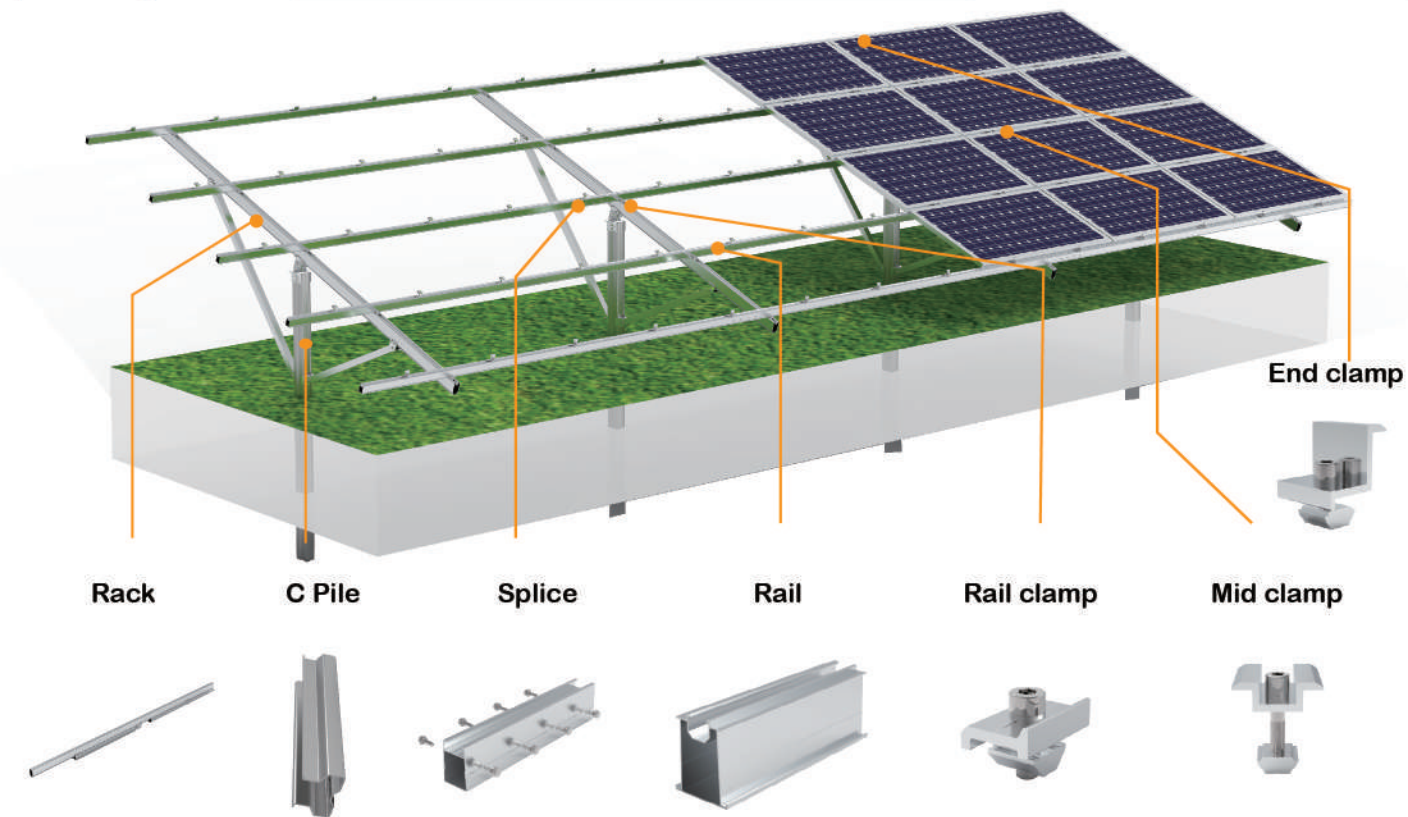
- 1 Ground screw foundation
2. Concrete foundation



## PROJECT CASE

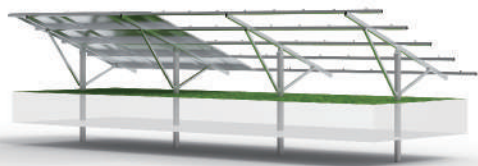


# HQ-GT2



## INTRODUCTION

HQ-GT2 is a ramming pile ground solution.



|                   |  |
|-------------------|--|
| Tilt angle        | 0-60°                                      |
| Wind speed        | 0-80m/s                                    |
| Snow load         | 0-150cm                                    |
| Design standard   | AS/NZS1170, JIS C 8955: 2011/2017, DIN1055 |
| Material          | Q235B,AL6005-T5&SS304                      |
| Installation site | Ground open field                          |

## ADVANTAGE

|                   |                |                              |                      |                          |                                |
|-------------------|----------------|------------------------------|----------------------|--------------------------|--------------------------------|
|                   |                |                              |                      |                          |                                |
| 25 years warranty | 85µm HDG layer | Ramming solution Saving time | East-west adjustable | Pre-assembled, save time | Different environment suitable |

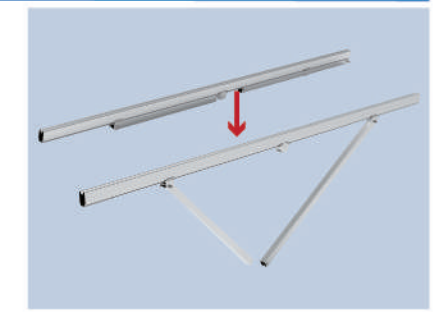
## INSTALLATION



1 Pile test



2 Ramming pile installation



3 Unfold pre-assemble rack



4 Fix Pre-assemble rack above ramming piles



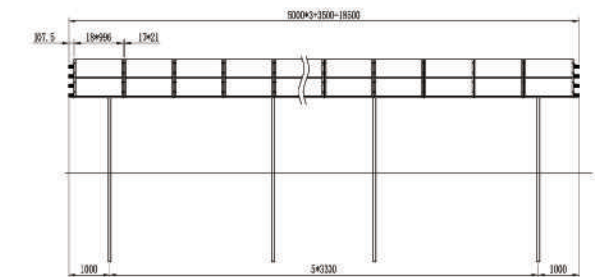
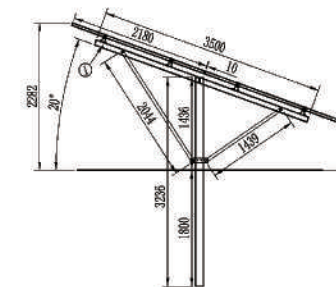
5 Install rails as drawing



6 Fixing solar panel with mounting clamps

## DESIGN DRAWINGS

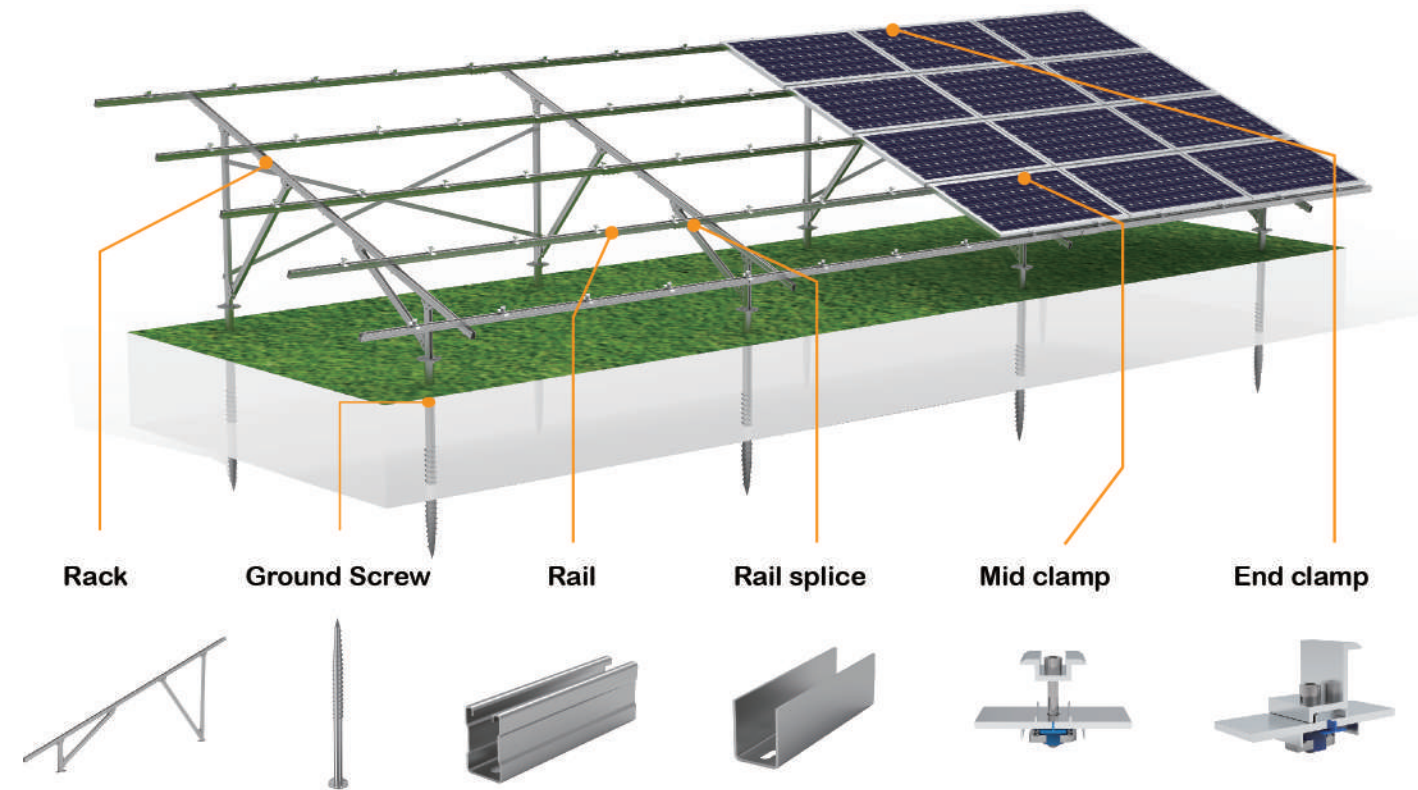
1. Side drawing
2. Front drawing



## PROJECT CASE

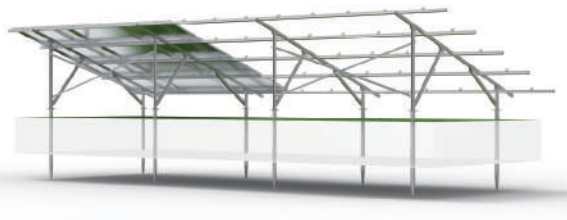


# HQ-GT3



## INTRODUCTION

HQ-GT3 is a hot dip galvanized solution.



|                   |  |
|-------------------|--|
| Tilt angle        | 0-60°                                      |
| Wind speed        | 0-80m/s                                    |
| Snow load         | 0-150cm                                    |
| Design standard   | AS/NZS1170, JIS C 8955: 2011/2017, DIN1055 |
| Material          | Q235B,AL6005-T5&SS304                      |
| Installation site | Ground open field                          |

## ADVANTAGE

|                         |                |                  |                      |                     |                               |                   |
|-------------------------|----------------|------------------|----------------------|---------------------|-------------------------------|-------------------|
|                         |                |                  |                      |                     |                               |                   |
| DIY make cost effective | 85µm HDG layer | Simple structure | All places available | Flat roof available | Different solutions available | Easy installation |

## INSTALLATION



1 Pile test



2 Ground screw installation



3.1 Fix rack above ground screw



3.2 Fix rack above concrete base



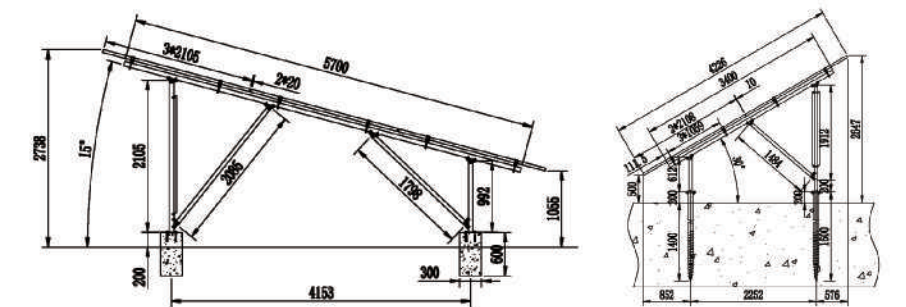
4 Fixed rails as drawing



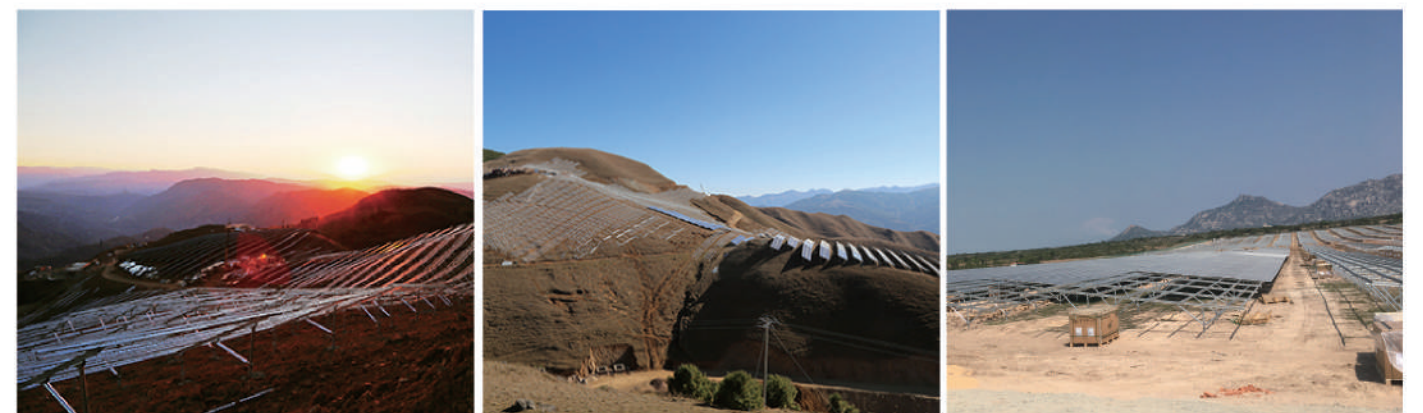
5 Fixing solar panel with mounting clamps

## DESIGN DRAWINGS

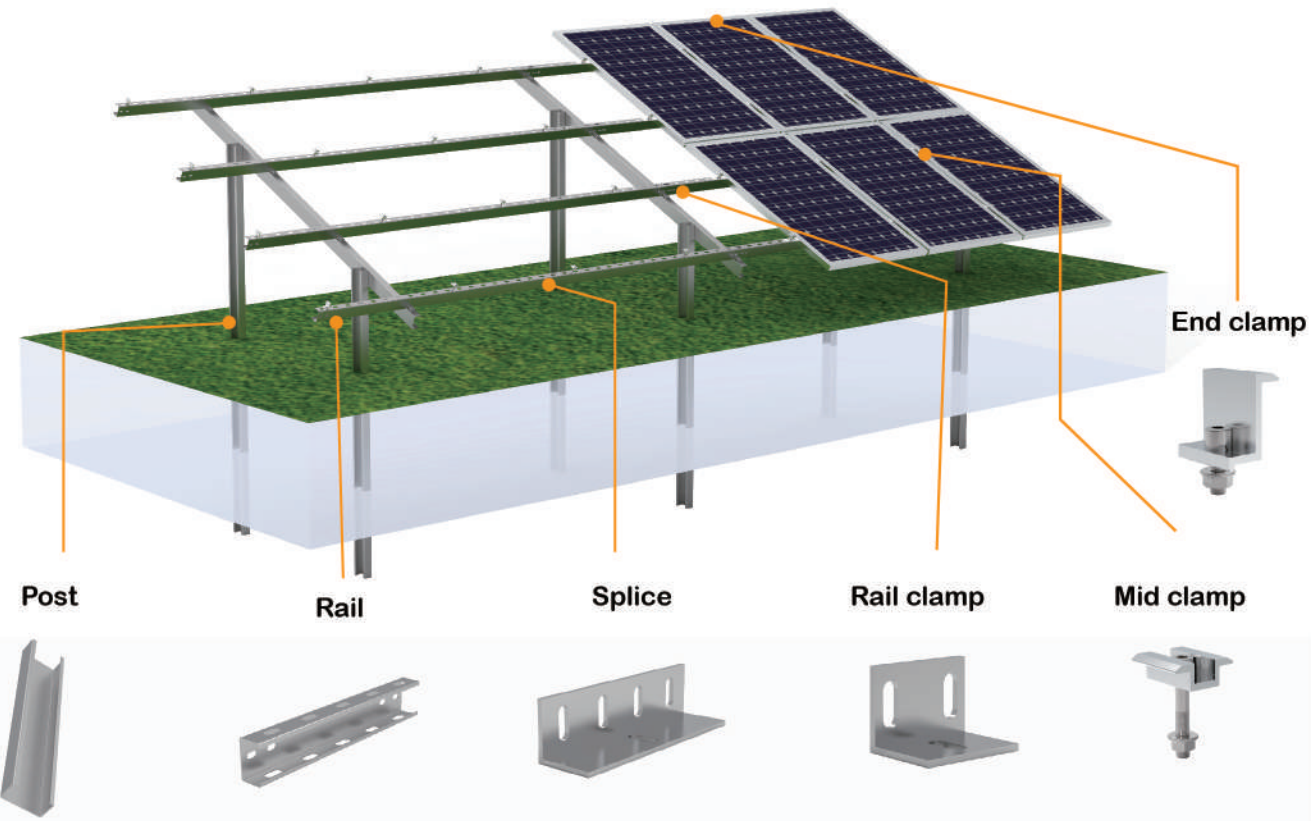
1. Concrete foundation drawing
2. Ground screw foundation drawing



## PROJECT CASE

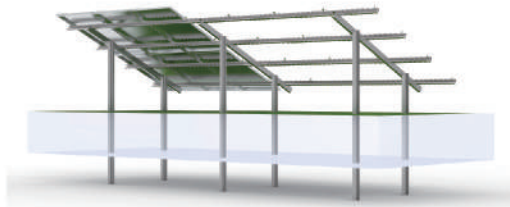


# HQ-GT4



## INTRODUCTION

HQ-GT4 is a double C post ground mounting solution.



|                   |  |
|-------------------|--|
| Tilt angle        | 0-60°                                      |
| Wind speed        | 0-80m/s                                    |
| Snow load         | 0-150cm                                    |
| Design standard   | AS/NZS1170, JIS C 8955: 2011/2017, DIN1055 |
| Material          | Q235B,AL6005-T5&SS304                      |
| Installation site | Ground open field                          |

## ADVANTAGE



Cost effective 25 Years lifetime



Ramming foundation easy to install



Double post provide balance



Aluminum & Steel rail available

## INSTALLATION



1 Pile test



2 Ramming pile installation



3 Install Beams



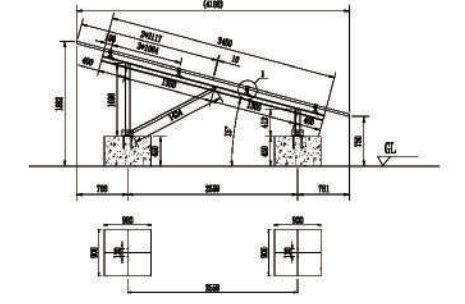
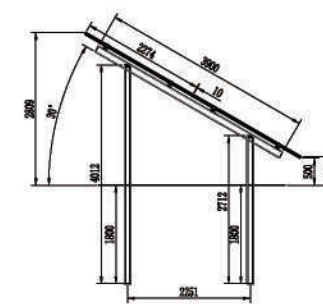
4 Install rails as drawing



5 Fixing solar panel with mounting clamps

## DESIGN DRAWINGS

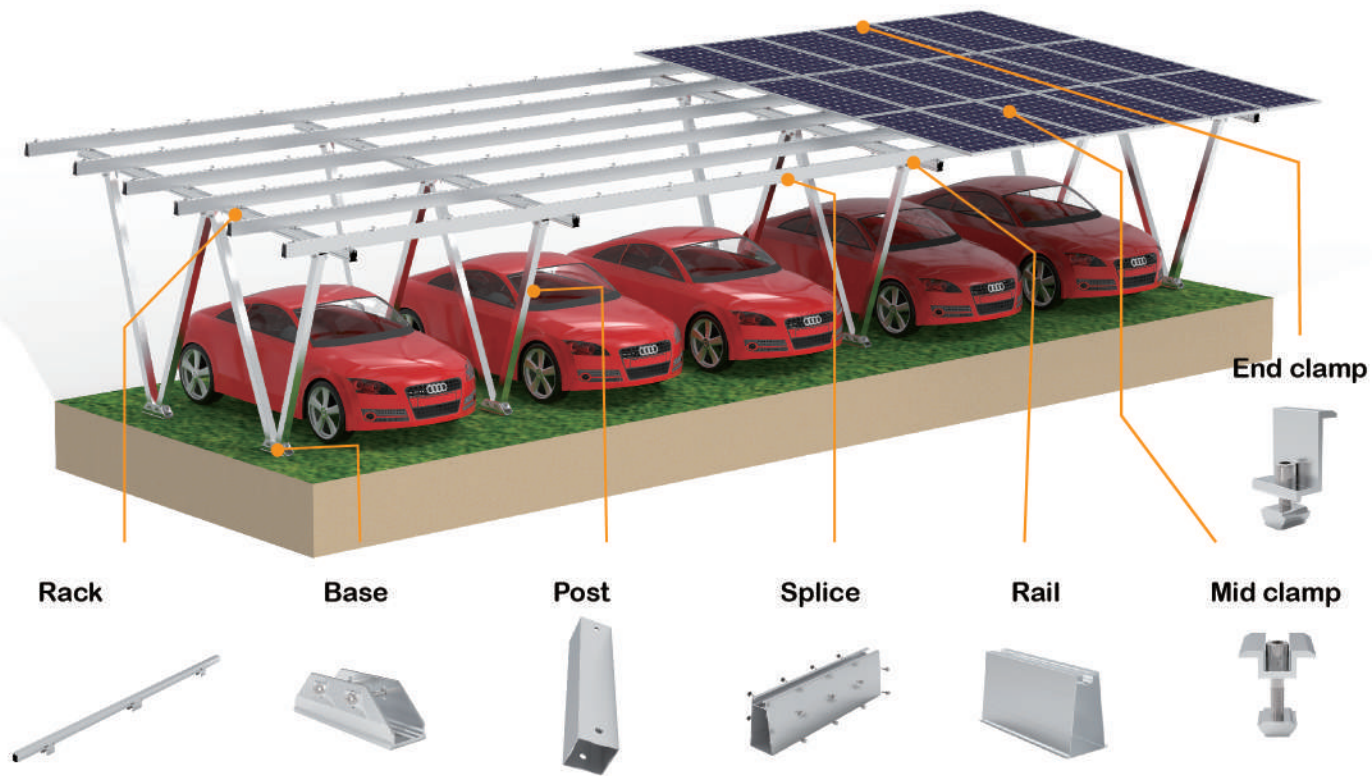
1. Ramming solution drawing
2. Concrete base drawing



## PROJECT CASE



# HQ-ASC01



## INTRODUCTION

HQ-ASC01 is a carport with aluminum structure.

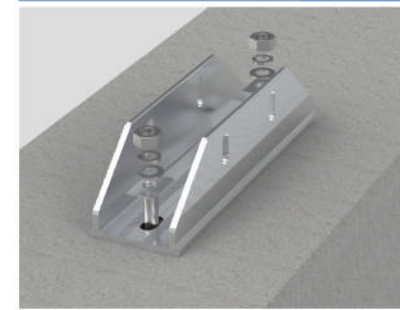


|                   |  |
|-------------------|--|
| Tilt angle        | 0-30°                                      |
| Wind speed        | 0-80m/s                                    |
| Snow load         | 0-150cm                                    |
| Design standard   | AS/NZS1170, JIS C 8955: 2011/2017, DIN1055 |
| Material          | Q235B,AL6005-T5&SS304                      |
| Installation site | Ground open field                          |

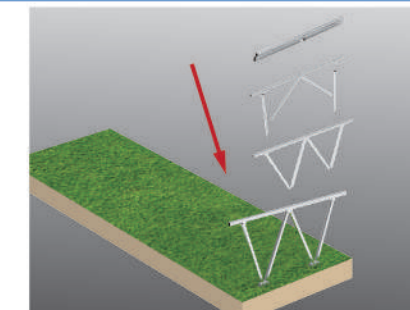
## ADVANTAGE

|                                 |  |                                      |   |
|---------------------------------|--|--------------------------------------|---|
|                                 |  |                                      |   |
| Customization for every project | Steel and waterproof structure available | Commercial and residential available | Pre-assembled rack save installation time |

## INSTALLATION



1 Install base with right angle bolts



2 Unfold pre-assemble rack



3 Fix rack with U base



4 Install rails as drawing



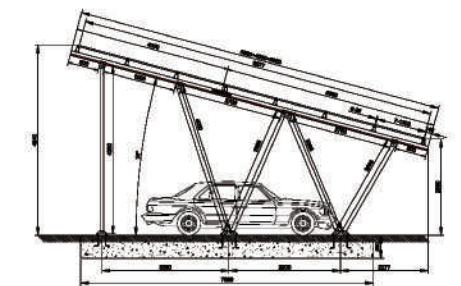
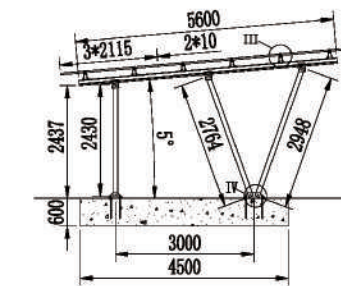
5 Fix panel with clamps



6 Installation is complete

## DESIGN DRAWINGS

1. Side drawing
2. Front drawing

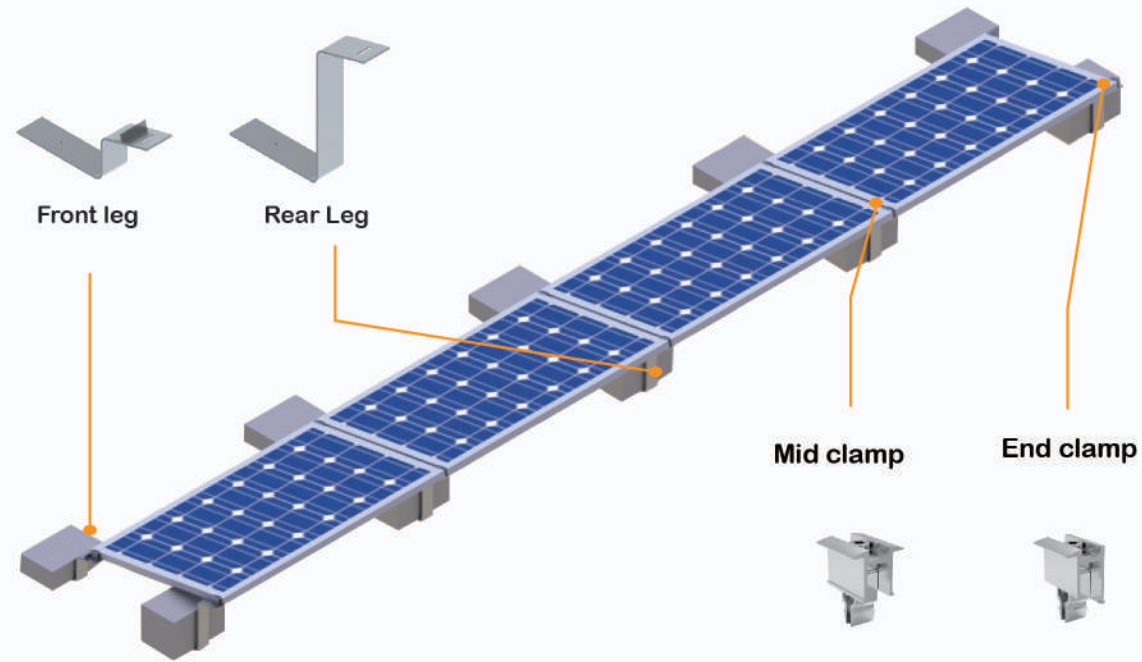


## PROJECT CASE



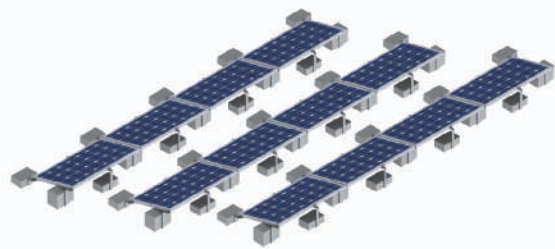


# HQ-BR2



## INTRODUCTION

HQ-BR2 is a triangle mounting system for rooftop and ground.

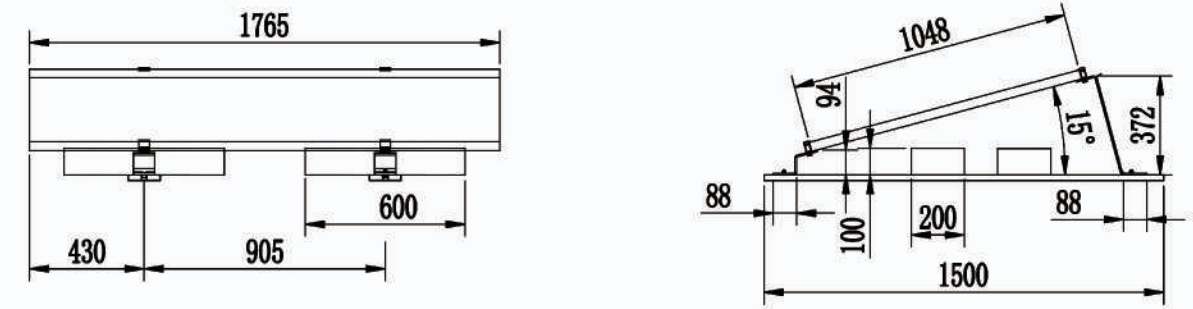


|                   |  |
|-------------------|--|
| Tilt angle        | 10°, 15°, 20°, 30° customized              |
| Wind speed        | 0-65m/s                                    |
| Snow load         | 0-150cm                                    |
| Design standard   | AS/NZS1170, JIS C 8955: 2011/2017, DIN1055 |
| Material          | AL6005-T5&SS304                            |
| Installation site | Flat Rooftop/Ground Open Field             |

## ADVANTAGE

|                                  |                    |                  |                   |
|----------------------------------|--------------------|------------------|-------------------|
|                                  |                    |                  |                   |
| Cost effective 25 Years lifetime | Degrees customized | Simple structure | Easy Installation |

## DESIGN DRAWINGS



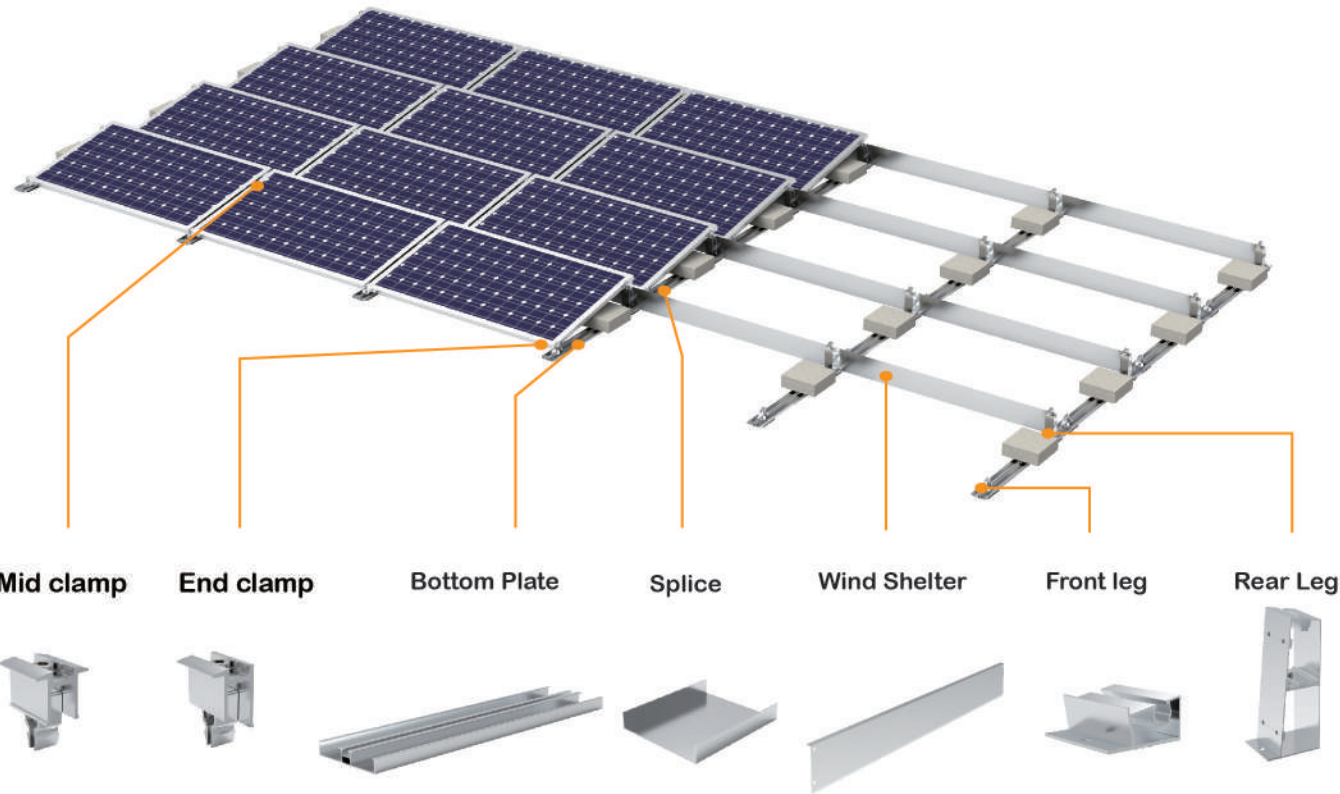
## INSTALLATION

|   |  |  |
|---|--|--|
| <b>1</b> Put front legs as drawings<br>         | <b>2</b> Put concrete block above front legs<br> | <b>3</b> Put rear legs as drawings<br> |
| <b>4</b> Put concrete block above rear legs<br> | <b>5</b> Fixing panels with clamps<br>           | <b>6</b> Repeat above steps<br>        |

## PROJECT CASE



# HQ-BR4



## INTRODUCTION

HQ-BR4 is a triangle mounting system for rooftop and ground.



|                   |  |
|-------------------|--|
| Tilt angle        | 10°, 15°                                   |
| Wind speed        | 0-65m/s                                    |
| Snow load         | 0-150cm                                    |
| Design standard   | AS/NZS1170, JIS C 8955: 2011/2017, DIN1055 |
| Material          | AL6005-T5&SS304                            |
| Installation site | Flat Rooftop/Ground Open Field             |

## ADVANTAGE

|                                  |                         |                  |                   |
|----------------------------------|-------------------------|------------------|-------------------|
|                                  |                         |                  |                   |
| Cost effective 25 Years lifetime | 10/15 degrees available | Simple structure | Easy Installation |

## PROJECT SOLUTION



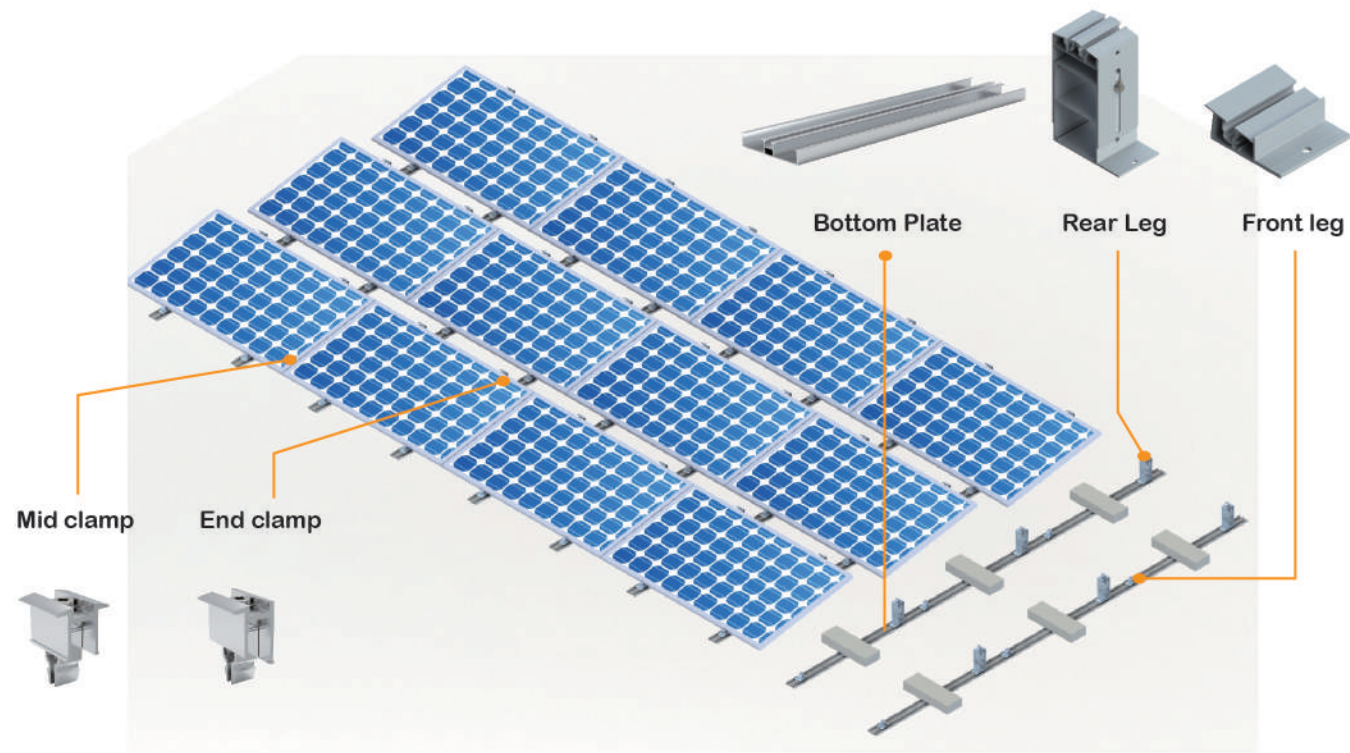
## INSTALLATION

- 1** Fix bottom plate with EPDM
- 2** Connect bottom plate with plate connector
- 3** Install front leg as designs
- 4** Install rear leg as designed space
- 5** Put concrete block above the bottom plate
- 6** Put panels above legs
- 7** Fix panels with clamps
- 8** Fix wind shelter
- 9** The installation is complete

## PROJECT CASE

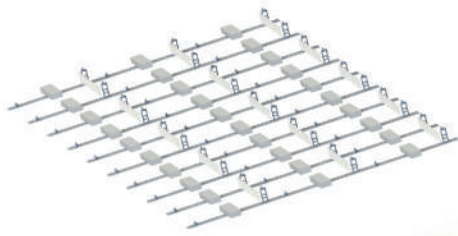


# HQ-BR6



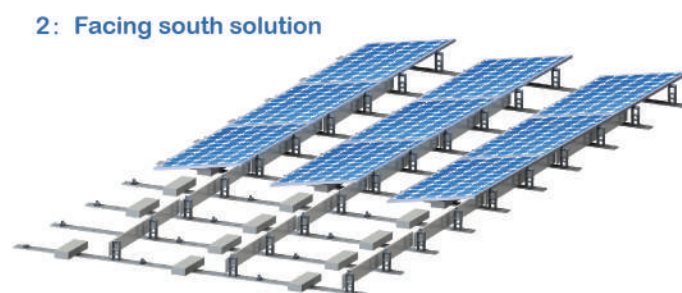
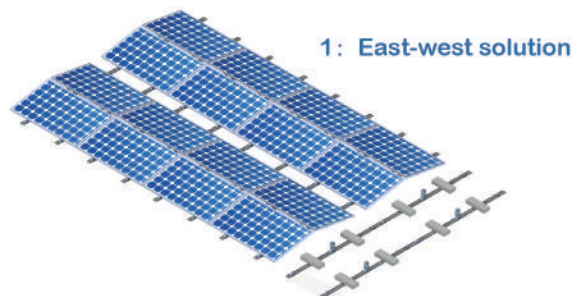
## INTRODUCTION

HQ-BR6 is a triangle mounting system for rooftop and ground.

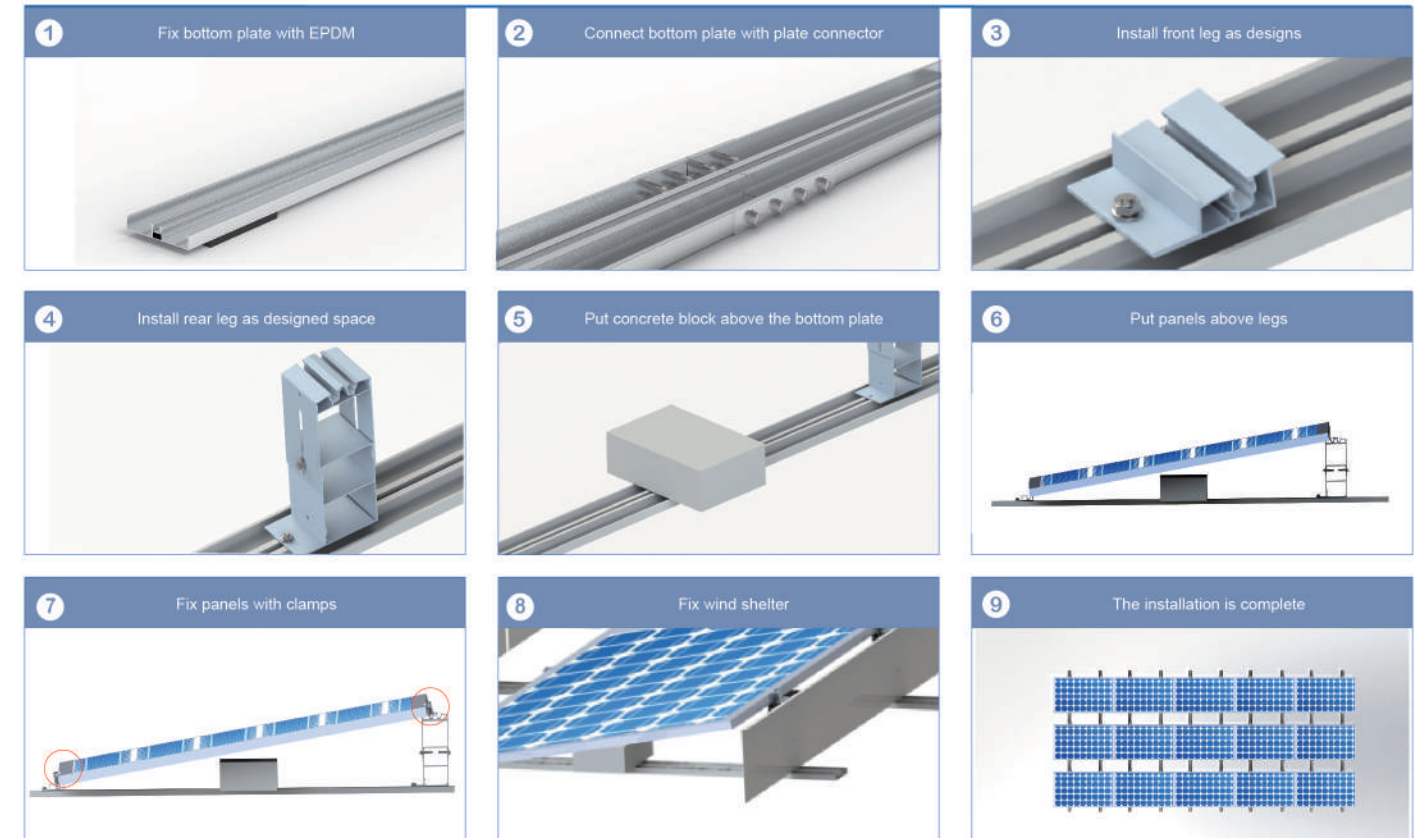


|                   |  |
|-------------------|--|
| Tilt angle        | Multi-angle                                |
| Wind speed        | 0-40m/s                                    |
| Snow load         | 0-150cm                                    |
| Design standard   | AS/NZS1170, JIS C 8955: 2011/2017, DIN1055 |
| Material          | AL6005-T5&SS304                            |
| Installation site | Ground open field                          |

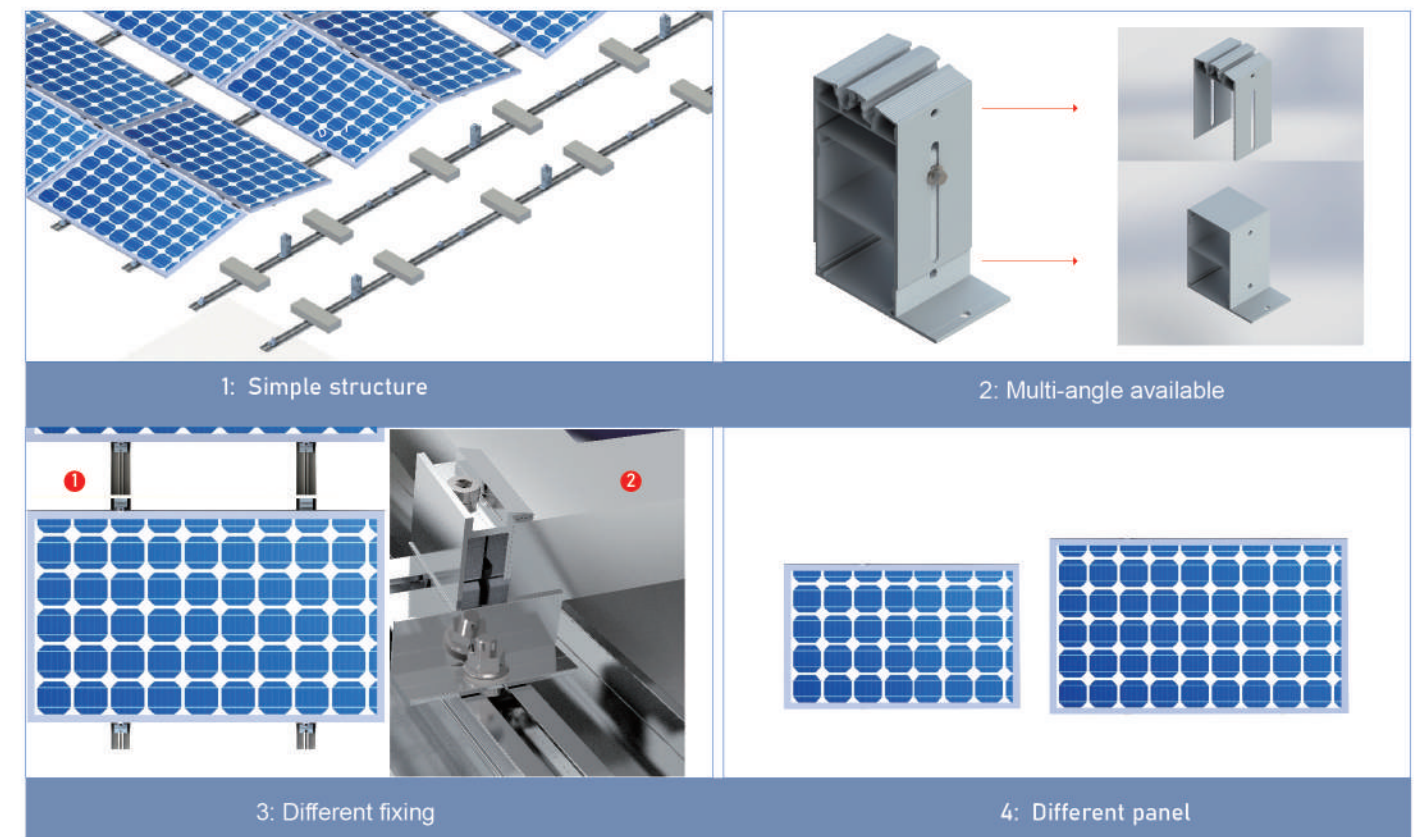
## PROJECT SOLUTION



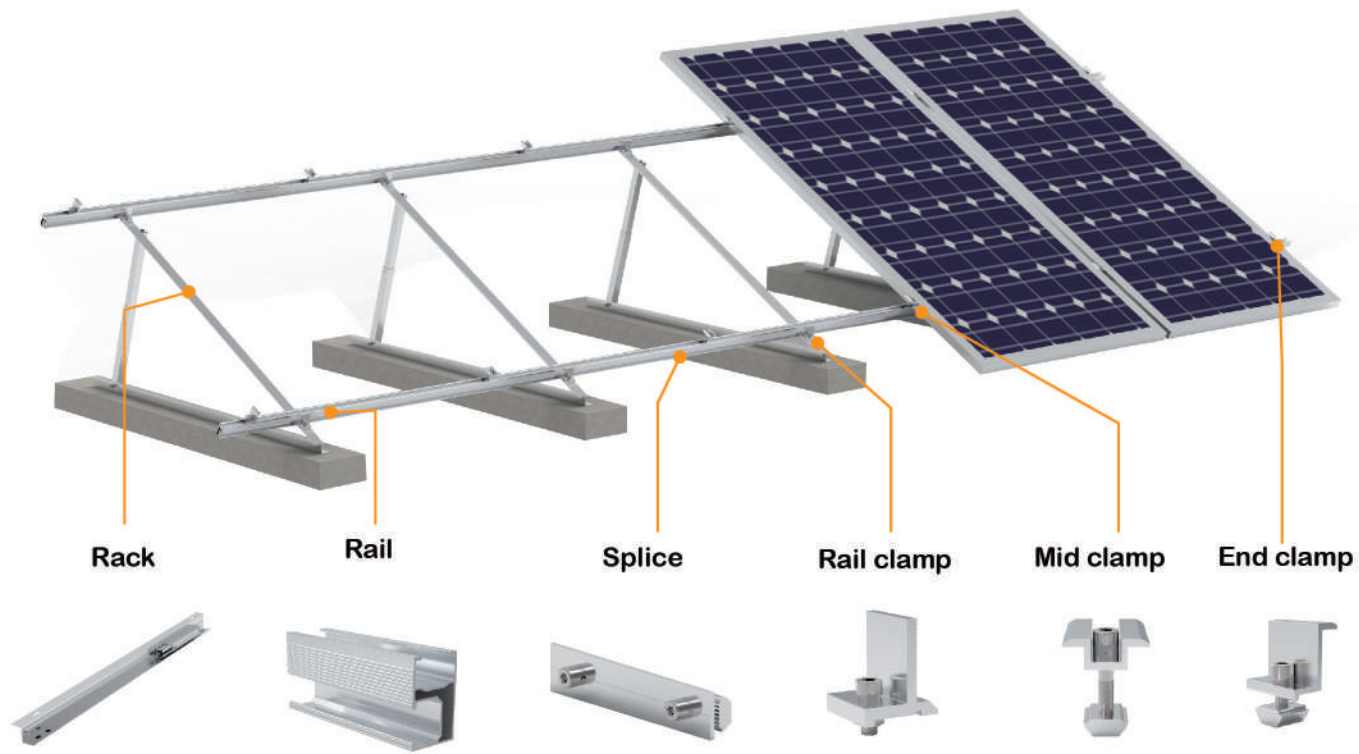
## INSTALLATION



## ADVANTAGE



# HQ-AR1



## INTRODUCTION

HQ-AR1 is a triangle mounting system for rooftop and ground.

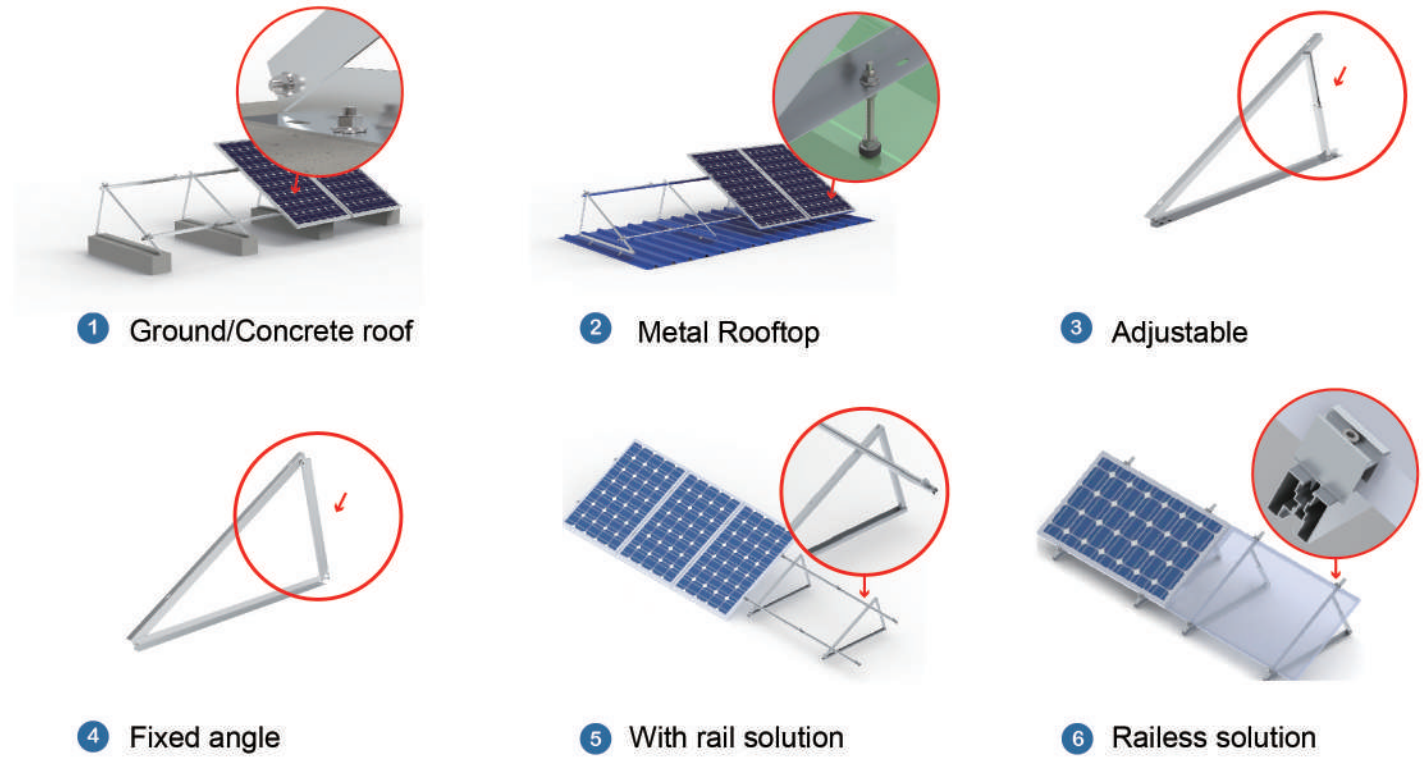


|                   |  |
|-------------------|--|
| Tilt angle        | 0-60°                                      |
| Wind speed        | 0-40m/s                                    |
| Snow load         | 0-150cm                                    |
| Design standard   | AS/NZS1170, JIS C 8955: 2011/2017, DIN1055 |
| Material          | Q235B,AL6005-T5&SS304                      |
| Installation site | Ground open field                          |

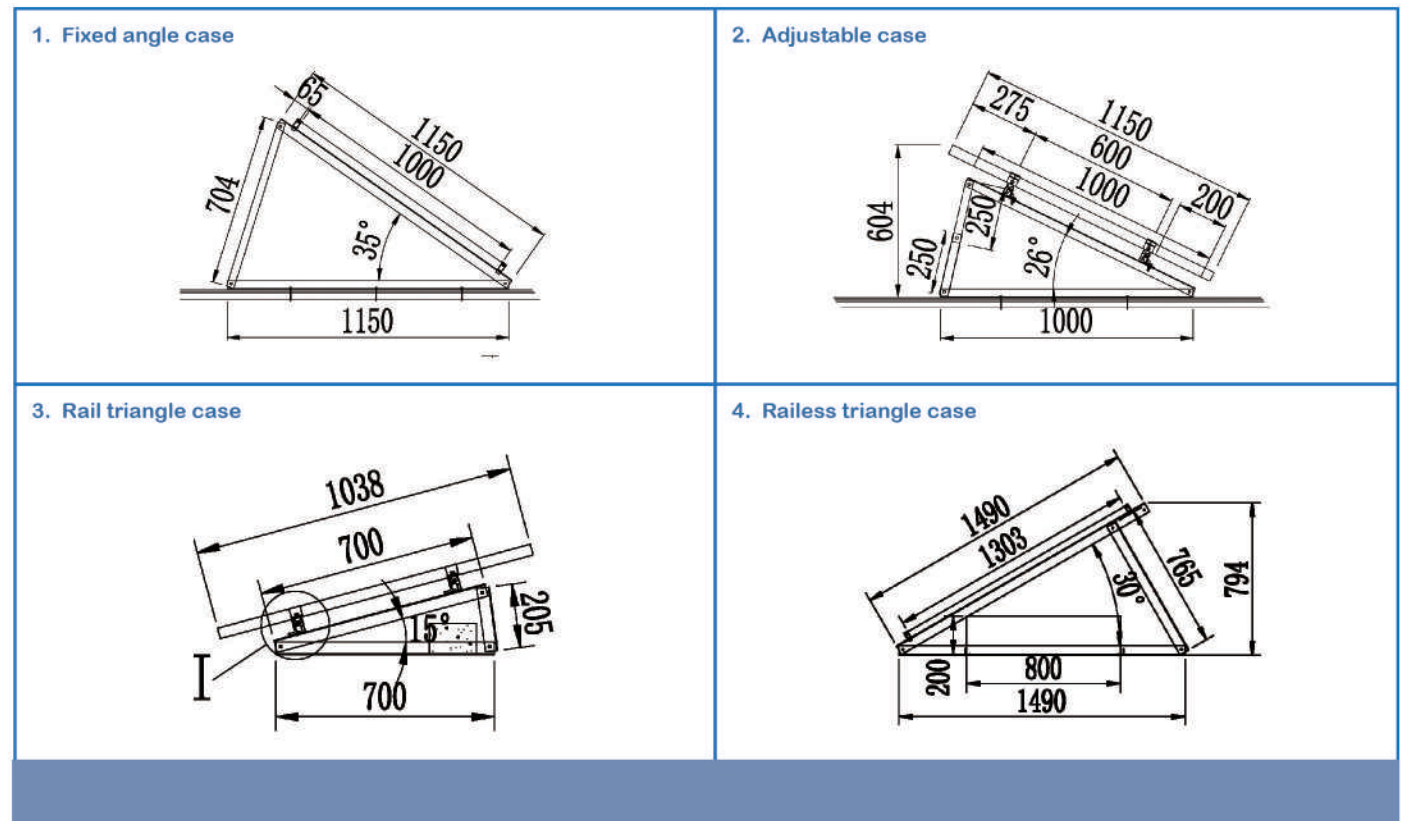
## PROJECT CASE



## APPLICATIONS



## DESIGN DRAWINGS





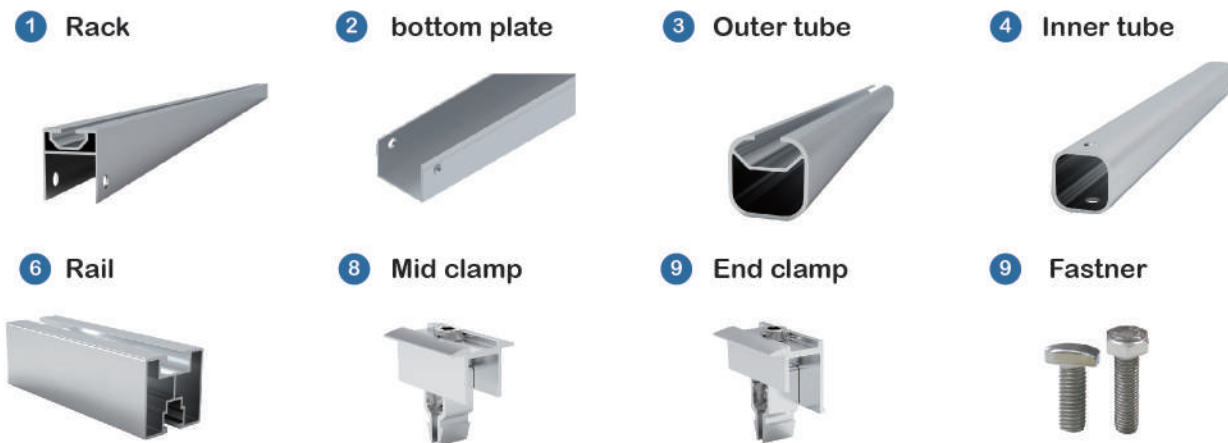
## INTRODUCTION

HQ-AR2 is a triangle mounting system for rooftop and ground.



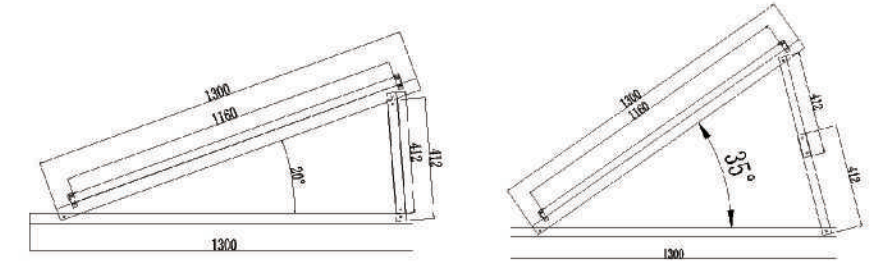
|                   |  |
|-------------------|--|
| Tilt angle        | 0-60°                                      |
| Wind speed        | 0-40m/s                                    |
| Snow load         | 0-150cm                                    |
| Design standard   | AS/NZS1170, JIS C 8955: 2011/2017, DIN1055 |
| Material          | Q235B,AL6005-T5&SS304                      |
| Installation site | Ground open field                          |

## DETAILS



## DESIGN DRAWINGS

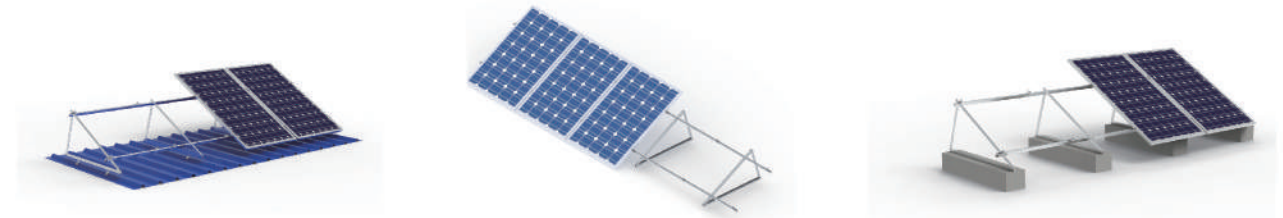
- 1 Fixed foundation
- 2 Adjustable foundation



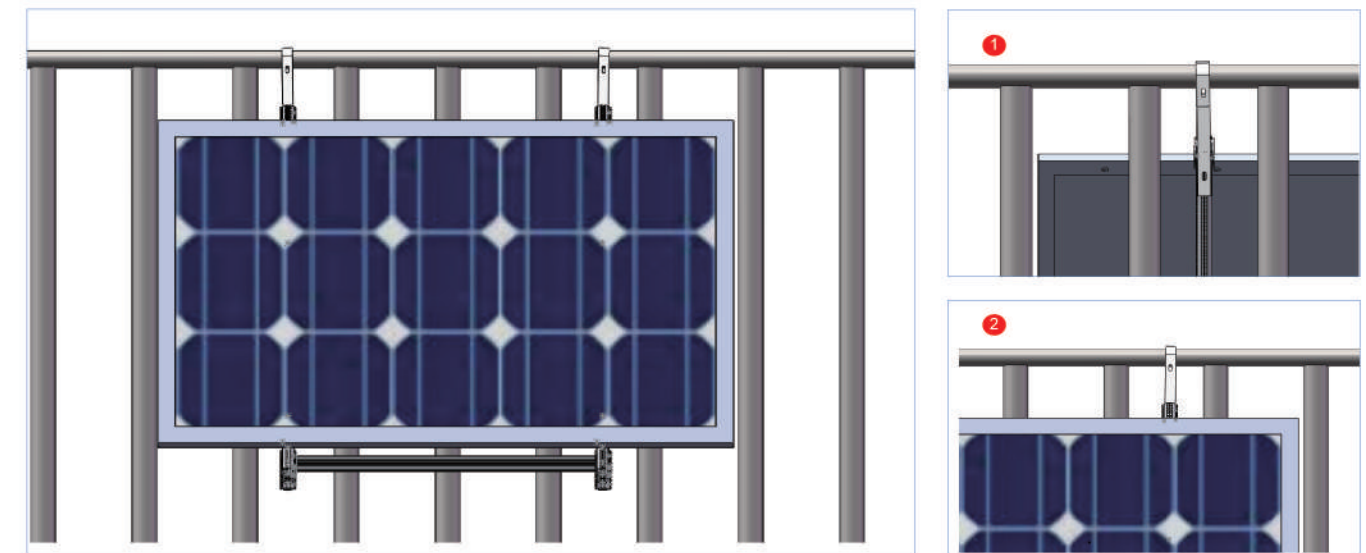
## APPLICATIONS



- 1 Fixed & adjustable angle available
- 2 Pre-assemble rack save time



- 4 Metal Rooftop
- 5 Flat roof
- 6 Ground space



- 7 For balcony

# HQ-TR01



## INTRODUCTION

HQ-TR1 is a mounting solution for trapezoidal roof.



|                   |  |
|-------------------|--|
| Tilt angle        | 0-30°                                      |
| Wind speed        | 0-40m/s                                    |
| Snow load         | 0-150cm                                    |
| Design standard   | AS/NZS1170, JIS C 8955: 2011/2017, DIN1055 |
| Material          | Q235B,AL6005-T5&SS304                      |
| Installation site | Ground open field                          |

## PROJECT CASE



## APPLICATIONS

**Mini rail**

**Railless**

**Mini rail**

**Railless and mini rail solution**

U30 U40 U50 U55 U55c U67 U70

**Adjustable clamping**

(Universal/SS304)

(Universal/Aluminum)

**L feet**

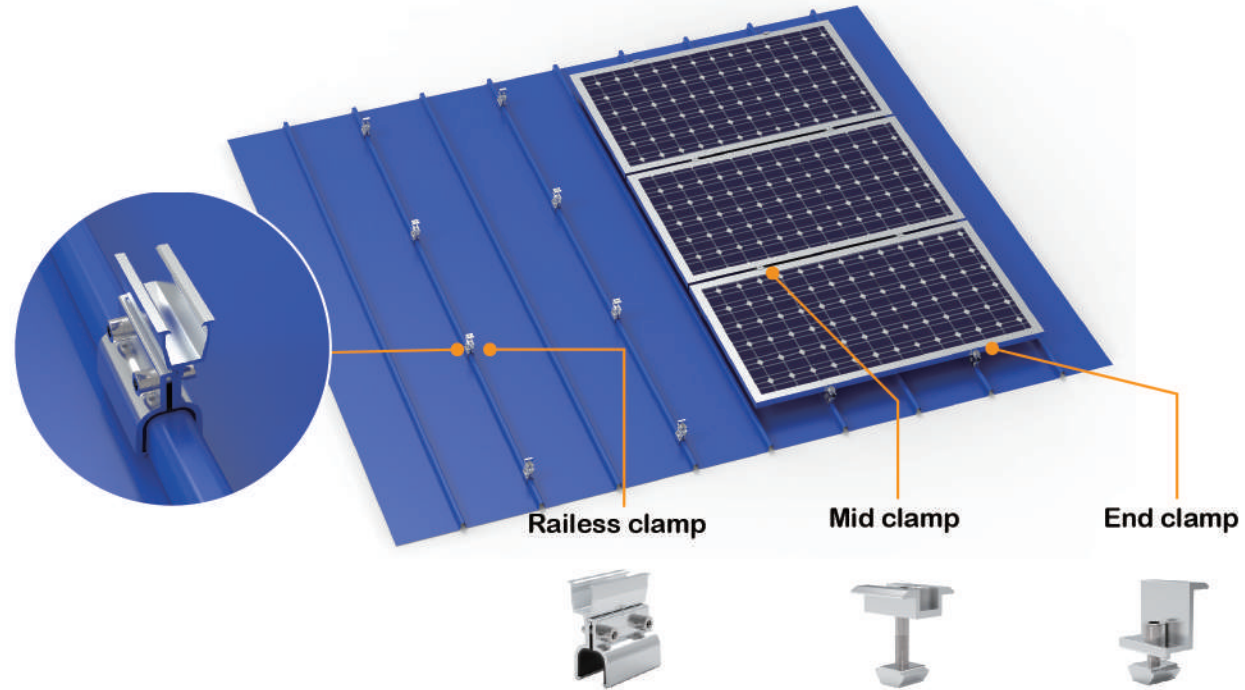
( Hanger bolt) and ( Self-tapping screw)

**Fixed clamping**

( Easy installation)

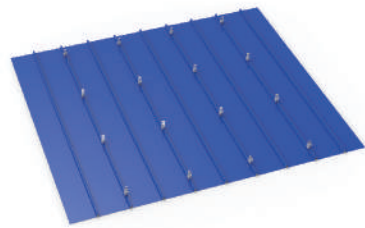
**Adjustable legs**

# HQ-SS01



## INTRODUCTION

HQ-SS01 has various solution for standing seam roof



|                   |  |
|-------------------|--|
| Surface           | Anodized                                   |
| Wind speed        | 0-40m/s                                    |
| Snow load         | 0-150cm                                    |
| Design standard   | AS/NZS1170, JIS C 8955: 2011/2017, DIN1055 |
| Material          | AL6005-T5&SS304                            |
| Installation site | Standing seam roof                         |

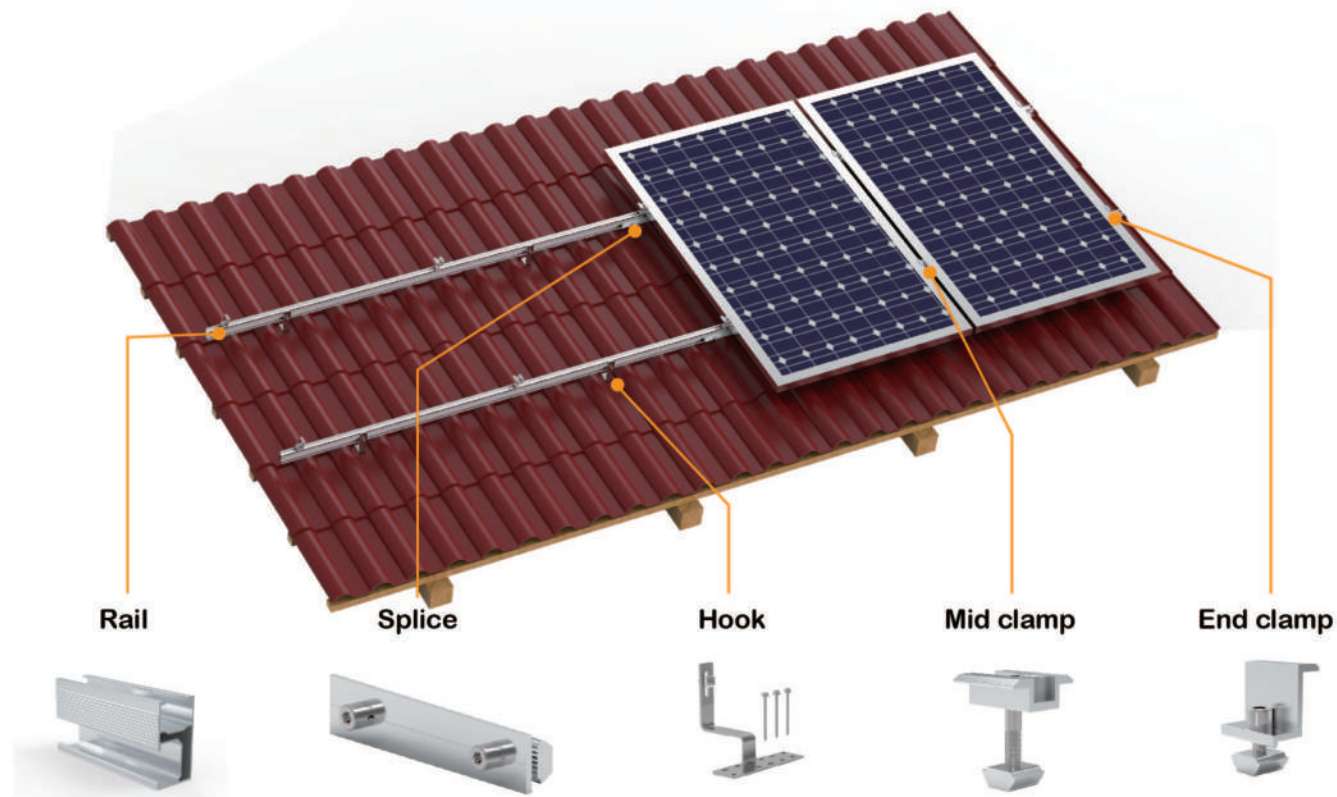
## APPLICATIONS

|  |   |  |                         |
|--|---|--|-------------------------|
|  | 1 Clamp+L feet solution (Common solution)     |  | 2 Clamp+H rail solution |
|  | 3 Clamp+Rail clamp solution (Common solution) |  | 4 Railless solution     |

## INSTALLATION

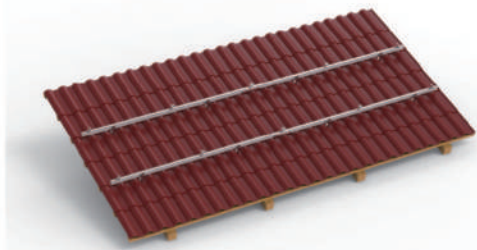
|  |           |  |  |            |                          |
|--|-----------|--|--|------------|--------------------------|
|  | HQ-KL406  | Klip lok 406 roof sheet<br>COVER 406mm |  | HQ-KL700   | Klip lok 700 roof sheet  |
|  | HQ-KL700S | Klip lok 700 roof sheet                |  | HQ-KL700AB | Klip lok 700 roof sheet  |
|  | HQ-KZ01   | Kalzip roof sheet<br>400/420/430mm     |  | HQ-L01     | Locked roof sheet        |
|  | HQ-S855   | Klip lok 855 roof sheet                |  | HQ-SS01    | Standing seam roof sheet |
|  | HQ-TR01   | Trapezoidal roof sheet                 |  | HQ-DC01    | Diamond roof sheet       |
|  | HQ-DC02   | Diamond roof sheet                     |  | HQ-DC03    | Diamond roof sheet       |
|  | HQ-KL720S | Diamond roof sheet                     |  | HQ-DL01    | Double lock roof sheet   |
|  | HQ-OL01   | Overlap roof sheet                     |  | HQ-SL01    | Single locked roof sheet |
|  | HQ-KS01S  | Single locked roof sheet               |  | HQ-SL03    | Snap lock roof sheet     |
|  | HQ-SH01   | Double locked roof sheet               |  | HQ-SH02    | Double locked roof sheet |

# HQ-TH01



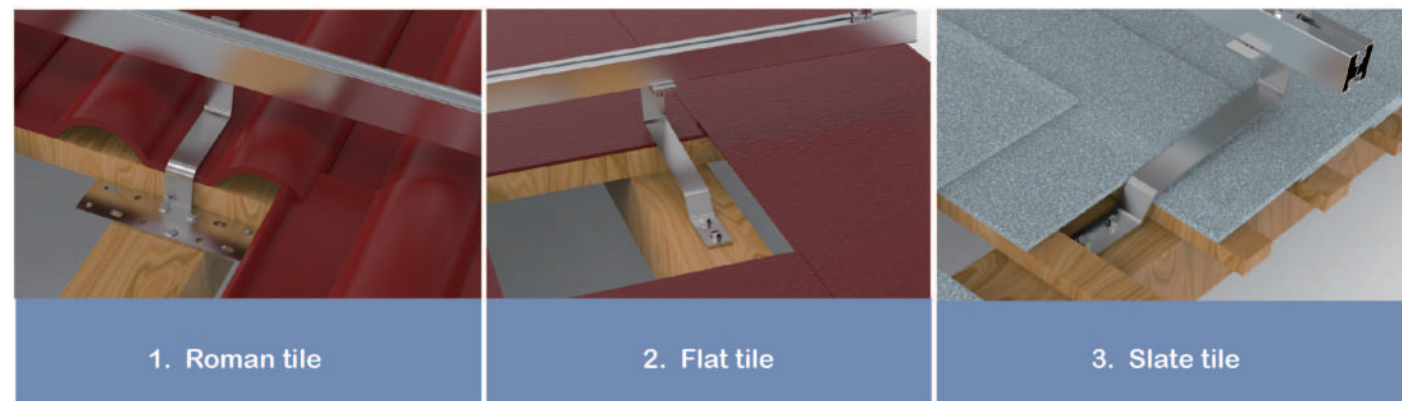
## INTRODUCTION

HQ Mount has various solution for solar tile roof.

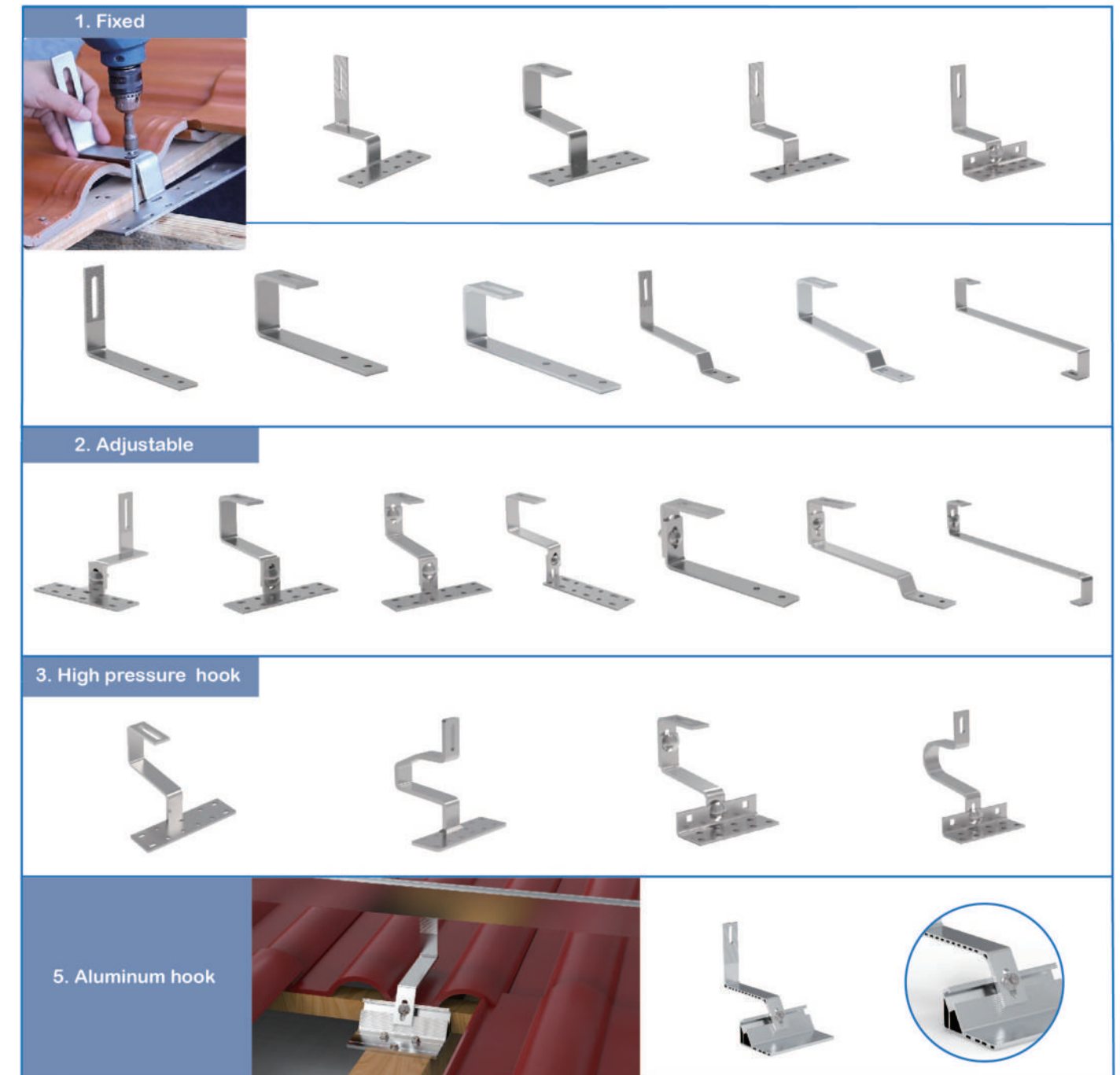


|                   |  |
|-------------------|--|
| Surface           | Clean/Anodized                             |
| Wind speed        | 0-40m/s                                    |
| Snow load         | 0-150cm                                    |
| Design standard   | AS/NZS1170, JIS C 8955: 2011/2017, DIN1055 |
| Material          | Q235B,AL6005-T5&SS304                      |
| Installation site | Ground open field                          |

## APPLICATIONS



## HOOK TYPES

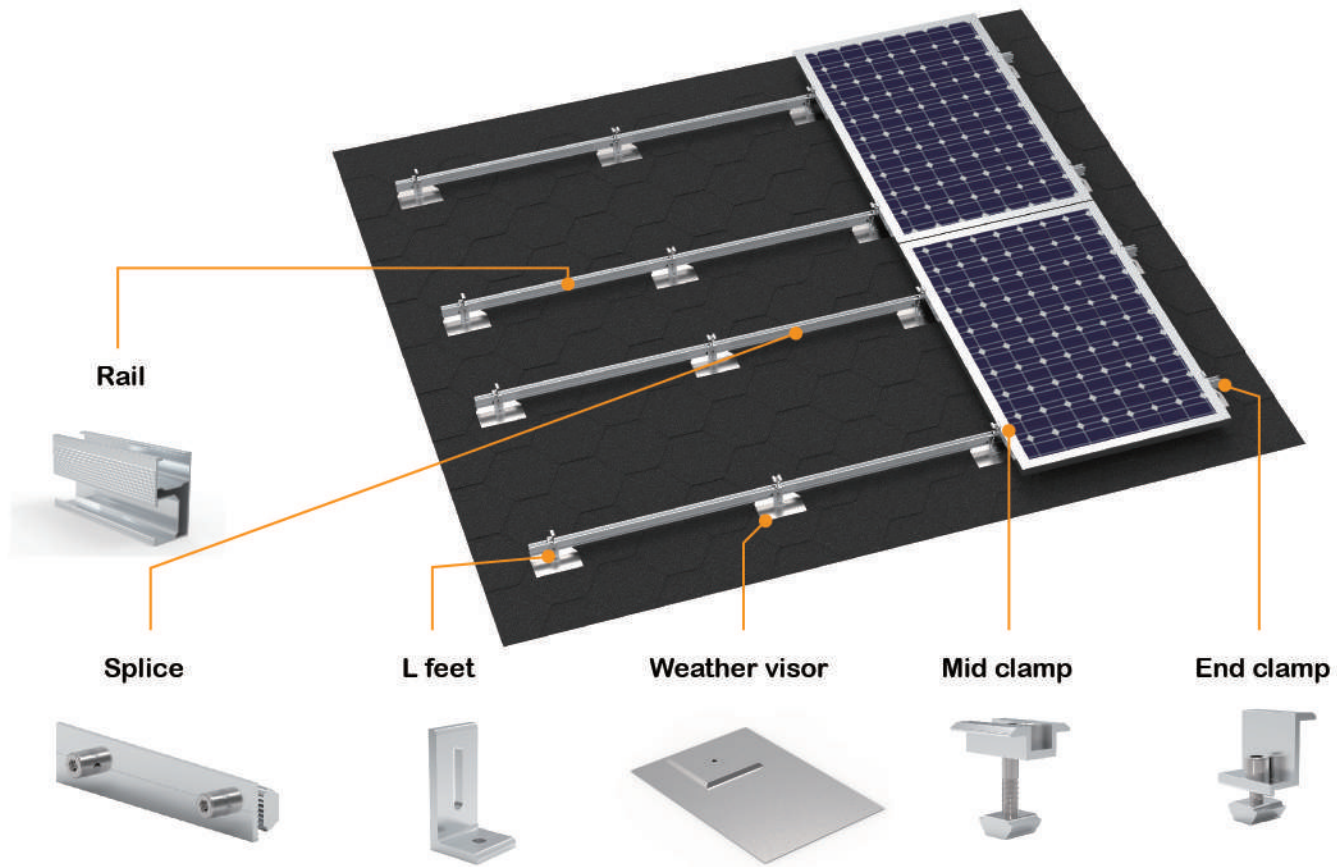


## INTRODUCTION



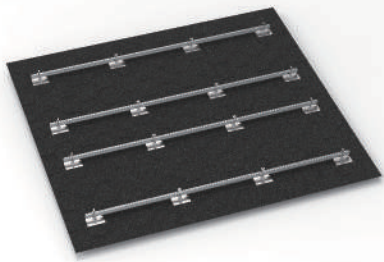


# HQ-AF01



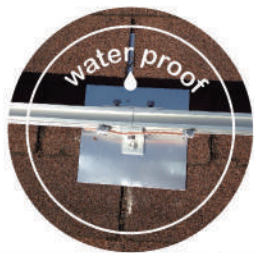
## INTRODUCTION

HQ Mount has various solution for solar shingle roof.



|                   |  |
|-------------------|--|
| Surface           | Mill surface/ Anodized                     |
| Wind speed        | 0-40m/s                                    |
| Snow load         | 0-150cm                                    |
| Design standard   | AS/NZS1170, JIS C 8955: 2011/2017, DIN1055 |
| Material          | AL5052/AL1070                              |
| Installation site | Solar roof                                 |

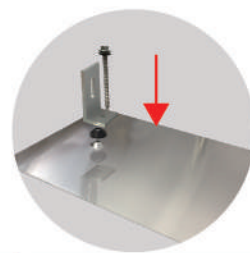
## ADVANTAGES



Waterproof



Cost effective 25 Years lifetime



Quick Installation



Not easy to deform

## APPLICATIONS

### 1 Replacing tile



### 2 Asphalt Shingle Roof



## DETAIL PHOTO



## PROJECT CASE

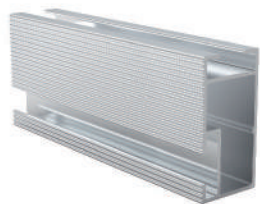


# Standard Component

## RAIL

[Long]

1



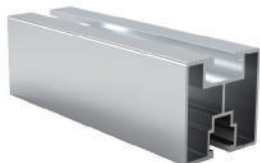
| ITEM    | MATERIAL  | SPEC.  | COLOR        | SURFACE  |
|---------|-----------|--------|--------------|----------|
| HQ-RR01 | AL6005-T5 | 1000mm | Silver/Black | Anodized |

2



| ITEM   | MATERIAL  | SPEC.  | COLOR        | SURFACE  |
|--------|-----------|--------|--------------|----------|
| HQ-H42 | AL6005-T5 | 1000mm | Silver/Black | Anodized |

3



| ITEM    | MATERIAL  | SPEC.  | COLOR        | SURFACE  |
|---------|-----------|--------|--------------|----------|
| HQ-W40B | AL6005-T5 | 1000mm | Silver/Black | Anodized |

4



| ITEM   | MATERIAL  | SPEC.  | COLOR        | SURFACE  |
|--------|-----------|--------|--------------|----------|
| HQ-W45 | AL6005-T5 | 1000mm | Silver/Black | Anodized |

5



| ITEM   | MATERIAL  | SPEC.  | COLOR        | SURFACE  |
|--------|-----------|--------|--------------|----------|
| HQ-W50 | AL6005-T5 | 1000mm | Silver/Black | Anodized |

## RAIL CONNECTOR

A



| ITEM       | MATERIAL  | SPEC. | COLOR        | SURFACE  |
|------------|-----------|-------|--------------|----------|
| HQ-SP-RR01 | AL6005-T5 | 150mm | Silver/Black | Anodized |

B



| ITEM      | MATERIAL  | SPEC. | COLOR        | SURFACE  |
|-----------|-----------|-------|--------------|----------|
| HQ-SP-H42 | AL6005-T5 | 150mm | Silver/Black | Anodized |

C



| ITEM      | MATERIAL  | SPEC. | COLOR        | SURFACE  |
|-----------|-----------|-------|--------------|----------|
| HQ-SP-W40 | AL6005-T5 | 150mm | Silver/Black | Anodized |

D



| ITEM       | MATERIAL  | SPEC. | COLOR        | SURFACE  |
|------------|-----------|-------|--------------|----------|
| HQ-SP-W50B | AL6005-T5 | 150mm | Silver/Black | Anodized |

E

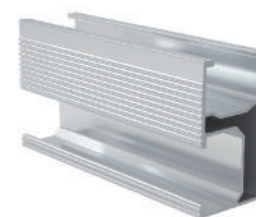


| ITEM      | MATERIAL  | SPEC. | COLOR        | SURFACE  |
|-----------|-----------|-------|--------------|----------|
| HQ-SP-W50 | AL6005-T5 | 150mm | Silver/Black | Anodized |

## RAIL

[Long]

6



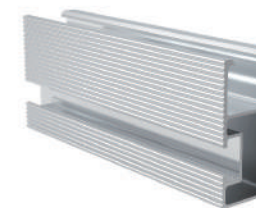
| ITEM    | MATERIAL  | SPEC.  | COLOR        | SURFACE  |
|---------|-----------|--------|--------------|----------|
| HQ-W50B | AL6005-T5 | 1000mm | Silver/Black | Anodized |

7



| ITEM   | MATERIAL  | SPEC.  | COLOR        | SURFACE  |
|--------|-----------|--------|--------------|----------|
| HQ-W37 | AL6005-T5 | 1000mm | Silver/Black | Anodized |

8



| ITEM   | MATERIAL  | SPEC.  | COLOR        | SURFACE  |
|--------|-----------|--------|--------------|----------|
| HQ-W52 | AL6005-T5 | 1000mm | Silver/Black | Anodized |

9



| ITEM   | MATERIAL  | SPEC.  | COLOR        | SURFACE  |
|--------|-----------|--------|--------------|----------|
| HQ-W42 | AL6005-T5 | 1000mm | Silver/Black | Anodized |

10



| ITEM   | MATERIAL | SPEC.  | COLOR | SURFACE           |
|--------|----------|--------|-------|-------------------|
| HQ-U42 | Q235     | 1000mm | White | Hot dip gavalnize |

## RAIL CONNECTOR

F



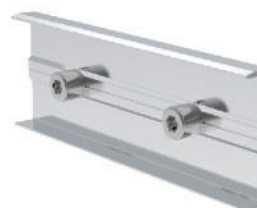
| ITEM       | MATERIAL  | SPEC. | COLOR        | SURFACE  |
|------------|-----------|-------|--------------|----------|
| HQ-SP-W50B | AL6005-T5 | 150mm | Silver/Black | Anodized |

G



| ITEM      | MATERIAL  | SPEC. | COLOR        | SURFACE  |
|-----------|-----------|-------|--------------|----------|
| HQ-SP-W37 | AL6005-T5 | 150mm | Silver/Black | Anodized |

H



| ITEM      | MATERIAL  | SPEC. | COLOR        | SURFACE  |
|-----------|-----------|-------|--------------|----------|
| HQ-SP-W52 | AL6005-T5 | 150mm | Silver/Black | Anodized |

I



| ITEM      | MATERIAL  | SPEC. | COLOR        | SURFACE  |
|-----------|-----------|-------|--------------|----------|
| HQ-SP-W42 | AL6005-T5 | 150mm | Silver/Black | Anodized |

J



| ITEM      | MATERIAL | SPEC. | COLOR | SURFACE           |
|-----------|----------|-------|-------|-------------------|
| HQ-SP-U42 | Q235     | 150mm | White | Hot dip gavalnize |

# Standard Component

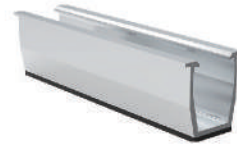
## ▶ RAIL [Short]

1



| ITEM   | MATERIAL  | SPEC.     | COLOR        | SURFACE  |
|--------|-----------|-----------|--------------|----------|
| HQ-U22 | AL6005-T5 | 180/250mm | Silver/Black | Anodized |

2



| ITEM   | MATERIAL  | SPEC.     | COLOR        | SURFACE  |
|--------|-----------|-----------|--------------|----------|
| HQ-U30 | AL6005-T5 | 180/250mm | Silver/Black | Anodized |

3



| ITEM   | MATERIAL  | SPEC. | COLOR        | SURFACE  |
|--------|-----------|-------|--------------|----------|
| HQ-U40 | AL6005-T5 | 300mm | Silver/Black | Anodized |

4



| ITEM   | MATERIAL  | SPEC.     | COLOR        | SURFACE  |
|--------|-----------|-----------|--------------|----------|
| HQ-U50 | AL6005-T5 | 180/250mm | Silver/Black | Anodized |

5



| ITEM   | MATERIAL  | SPEC. | COLOR        | SURFACE  |
|--------|-----------|-------|--------------|----------|
| HQ-U55 | AL6005-T5 | 300mm | Silver/Black | Anodized |

6



| ITEM    | MATERIAL  | SPEC. | COLOR        | SURFACE  |
|---------|-----------|-------|--------------|----------|
| HQ-U55C | AL6005-T5 | 300mm | Silver/Black | Anodized |

7



| ITEM   | MATERIAL  | SPEC. | COLOR        | SURFACE  |
|--------|-----------|-------|--------------|----------|
| HQ-U67 | AL6005-T5 | 300mm | Silver/Black | Anodized |

8



| ITEM   | MATERIAL  | SPEC. | COLOR        | SURFACE  |
|--------|-----------|-------|--------------|----------|
| HQ-U70 | AL6005-T5 | 300mm | Silver/Black | Anodized |

## ▶ GROUND SCREW

1



| ITEM        | MATERIAL | SPEC.  | COLOR | SURFACE |
|-------------|----------|--------|-------|---------|
| HQ-GS01-N76 | Q235B    | 1600mm | -     | HDG     |

2



| ITEM        | MATERIAL | SPEC.  | COLOR | SURFACE |
|-------------|----------|--------|-------|---------|
| HQ-GS01-F76 | Q235B    | 1600mm | -     | HDG     |

3



| ITEM        | MATERIAL | SPEC.  | COLOR | SURFACE |
|-------------|----------|--------|-------|---------|
| HQ-GS02-N76 | Q235B    | 1600mm | -     | HDG     |

4



| ITEM        | MATERIAL | SPEC.  | COLOR | SURFACE |
|-------------|----------|--------|-------|---------|
| HQ-GS02-F76 | Q235B    | 1600mm | -     | HDG     |

5



| ITEM       | MATERIAL | SPEC.  | COLOR | SURFACE |
|------------|----------|--------|-------|---------|
| HQ-GS03-76 | Q235B    | 1600mm | -     | HDG     |



# Standard Component

## ▶ INTER CLAMP

1



| ITEM    | MATERIAL  | SPEC. | COLOR        | SURFACE  |
|---------|-----------|-------|--------------|----------|
| HQ-IC01 | AL6005-T5 | 40mm  | Silver/Black | Anodized |

2



| ITEM     | MATERIAL  | SPEC. | COLOR        | SURFACE  |
|----------|-----------|-------|--------------|----------|
| HQ-IC01S | AL6005-T5 | 40mm  | Silver/Black | Anodized |

3



| ITEM    | MATERIAL  | SPEC. | COLOR        | SURFACE  |
|---------|-----------|-------|--------------|----------|
| HQ-IC02 | AL6005-T5 | 40mm  | Silver/Black | Anodized |

4



| ITEM     | MATERIAL  | SPEC. | COLOR        | SURFACE  |
|----------|-----------|-------|--------------|----------|
| HQ-IC03A | AL6005-T5 | 40mm  | Silver/Black | Anodized |

## ▶ END CLAMP

A



| ITEM    | MATERIAL  | SPEC. | COLOR        | SURFACE  |
|---------|-----------|-------|--------------|----------|
| HQ-EC01 | AL6005-T5 | 40mm  | Silver/Black | Anodized |

B



| ITEM    | MATERIAL  | SPEC. | COLOR        | SURFACE  |
|---------|-----------|-------|--------------|----------|
| HQ-EC02 | AL6005-T5 | 40mm  | Silver/Black | Anodized |

C



| ITEM    | MATERIAL  | SPEC. | COLOR        | SURFACE  |
|---------|-----------|-------|--------------|----------|
| HQ-EC03 | AL6005-T5 | 40mm  | Silver/Black | Anodized |

D



| ITEM    | MATERIAL  | SPEC. | COLOR        | SURFACE  |
|---------|-----------|-------|--------------|----------|
| HQ-EC06 | AL6005-T5 | 40mm  | Silver/Black | Anodized |

## ▶ INTER CLAMP

5



| ITEM    | MATERIAL  | SPEC. | COLOR        | SURFACE  |
|---------|-----------|-------|--------------|----------|
| HQ-IC04 | AL6005-T5 | 40mm  | Silver/Black | Anodized |

6



| ITEM    | MATERIAL  | SPEC. | COLOR        | SURFACE  |
|---------|-----------|-------|--------------|----------|
| HQ-IC05 | AL6005-T5 | 40mm  | Silver/Black | Anodized |

7



| ITEM    | MATERIAL  | SPEC. | COLOR        | SURFACE  |
|---------|-----------|-------|--------------|----------|
| HQ-IC06 | AL6005-T5 | 40mm  | Silver/Black | Anodized |

8



| ITEM     | MATERIAL  | SPEC. | COLOR        | SURFACE  |
|----------|-----------|-------|--------------|----------|
| HQ-RIC01 | AL6005-T5 | 40mm  | Silver/Black | Anodized |

## ▶ END CLAMP

E



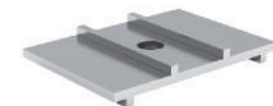
| ITEM     | MATERIAL  | SPEC.   | COLOR        | SURFACE  |
|----------|-----------|---------|--------------|----------|
| HQ-AEC01 | AL6005-T5 | 30-45mm | Silver/Black | Anodized |

F



| ITEM     | MATERIAL  | SPEC.   | COLOR        | SURFACE  |
|----------|-----------|---------|--------------|----------|
| HQ-AEC02 | AL6005-T5 | 35-50mm | Silver/Black | Anodized |

G



| ITEM    | MATERIAL  | SPEC. | COLOR        | SURFACE  |
|---------|-----------|-------|--------------|----------|
| HQ-TB01 | AL6005-T5 | 50mm  | Silver/Black | Anodized |

H



| ITEM     | MATERIAL  | SPEC. | COLOR        | SURFACE  |
|----------|-----------|-------|--------------|----------|
| HQ-REC01 | AL6005-T5 | 40mm  | Silver/Black | Anodized |

# Standard Component

## ▶ INTER CLAMP

9



| ITEM    | MATERIAL  | SPEC. | COLOR        | SURFACE  |
|---------|-----------|-------|--------------|----------|
| HQ-IC07 | AL6005-T5 | 40mm  | Silver/Black | Anodized |

10



| ITEM    | MATERIAL  | SPEC. | COLOR        | SURFACE  |
|---------|-----------|-------|--------------|----------|
| HQ-IC09 | AL6005-T5 | 40mm  | Silver/Black | Anodized |

11



| ITEM     | MATERIAL  | SPEC. | COLOR        | SURFACE  |
|----------|-----------|-------|--------------|----------|
| HQ-RIC02 | AL6005-T5 | 50mm  | Silver/Black | Anodized |

12



| ITEM      | MATERIAL  | SPEC. | COLOR        | SURFACE  |
|-----------|-----------|-------|--------------|----------|
| HQ-TFIC01 | AL6005-T5 | 80mm  | Silver/Black | Anodized |

13



| ITEM     | MATERIAL  | SPEC. | COLOR        | SURFACE  |
|----------|-----------|-------|--------------|----------|
| HQ-REC02 | AL6005-T5 | 150mm | Silver/Black | Anodized |

## ▶ END CLAMP

I



| ITEM    | MATERIAL  | SPEC. | COLOR        | SURFACE  |
|---------|-----------|-------|--------------|----------|
| HQ-CR01 | AL6005-T5 | 40mm  | Silver/Black | Anodized |

J



| ITEM    | MATERIAL  | SPEC. | COLOR        | SURFACE  |
|---------|-----------|-------|--------------|----------|
| HQ-ZB01 | AL6005-T5 | 40mm  | Silver/Black | Anodized |

K



| ITEM    | MATERIAL  | SPEC. | COLOR        | SURFACE  |
|---------|-----------|-------|--------------|----------|
| HQ-ZC01 | AL6005-T5 | 40mm  | Silver/Black | Anodized |

L



| ITEM      | MATERIAL  | SPEC. | COLOR        | SURFACE  |
|-----------|-----------|-------|--------------|----------|
| HQ-TFEC01 | AL6005-T5 | 80mm  | Silver/Black | Anodized |

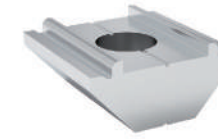
M



| ITEM     | MATERIAL  | SPEC. | COLOR        | SURFACE  |
|----------|-----------|-------|--------------|----------|
| HQ-REC03 | AL6005-T5 | 150mm | Silver/Black | Anodized |

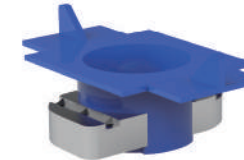
## ▶ NUT

1



| ITEM   | MATERIAL  | SPEC. | COLOR        | SURFACE  |
|--------|-----------|-------|--------------|----------|
| HQ-N01 | AL6005-T5 | 20mm  | Silver/Black | Anodized |

3



| ITEM    | MATERIAL  | SPEC. | COLOR        | SURFACE  |
|---------|-----------|-------|--------------|----------|
| HQ-DM01 | AL6005-T5 | 20mm  | Silver/Black | Anodized |

5



| ITEM    | MATERIAL | SPEC. | COLOR  | SURFACE |
|---------|----------|-------|--------|---------|
| HQ-DM02 | SS304    | -     | Nature | Clean   |

7



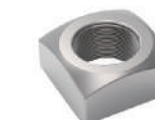
| ITEM    | MATERIAL  | SPEC. | COLOR        | SURFACE  |
|---------|-----------|-------|--------------|----------|
| HQ-SL01 | AL6005-T5 | 22mm  | Silver/Black | Anodized |

A



| ITEM    | MATERIAL | SPEC. | COLOR  | SURFACE |
|---------|----------|-------|--------|---------|
| HQ-FNM8 | SS304    | -     | Nature | Clean   |

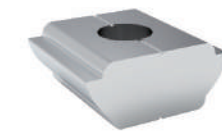
C



| ITEM    | MATERIAL | SPEC. | COLOR  | SURFACE |
|---------|----------|-------|--------|---------|
| HQ-SNM8 | SS304    | -     | Nature | Clean   |

## ▶ NUT

2



| ITEM   | MATERIAL  | SPEC. | COLOR        | SURFACE  |
|--------|-----------|-------|--------------|----------|
| HQ-N02 | AL6005-T5 | 20mm  | Silver/Black | Anodized |

4



| ITEM   | MATERIAL  | SPEC. | COLOR        | SURFACE  |
|--------|-----------|-------|--------------|----------|
| HQ-N03 | AL6005-T5 | 20mm  | Silver/Black | Anodized |

6



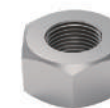
| ITEM    | MATERIAL | SPEC. | COLOR  | SURFACE |
|---------|----------|-------|--------|---------|
| HQ-DM03 | SS304    | -     | Nature | Clean   |

8



| ITEM   | MATERIAL  | SPEC. | COLOR        | SURFACE  |
|--------|-----------|-------|--------------|----------|
| HQ-R01 | AL6005-T5 | 16mm  | Silver/Black | Anodized |

B



| ITEM    | MATERIAL | SPEC. | COLOR  | SURFACE |
|---------|----------|-------|--------|---------|
| HQ-HNM8 | SS304    | -     | Nature | Clean   |

D



| ITEM    | MATERIAL | SPEC. | COLOR  | SURFACE |
|---------|----------|-------|--------|---------|
| HQ-TN01 | SS304    | -     | Nature | Clean   |

# Standard Component

## FASTENING

HANGER  
BOLT

1



| ITEM     | MATERIAL | SPEC. | COLOR  | SURFACE |
|----------|----------|-------|--------|---------|
| HQ-HBS01 | SS304    | 200mm | Nature | Clean   |

2



| ITEM    | MATERIAL | SPEC. | COLOR  | SURFACE |
|---------|----------|-------|--------|---------|
| HQ-HB01 | SS304    | 200mm | Nature | Clean   |

3



| ITEM    | MATERIAL | SPEC. | COLOR  | SURFACE |
|---------|----------|-------|--------|---------|
| HQ-BC01 | SS304    | 200mm | Nature | Clean   |

4



| ITEM    | MATERIAL | SPEC. | COLOR  | SURFACE |
|---------|----------|-------|--------|---------|
| HQ-BB01 | SS304    | 200mm | Nature | Clean   |

5



| ITEM    | MATERIAL | SPEC. | COLOR  | SURFACE |
|---------|----------|-------|--------|---------|
| HQ-BT01 | SS304    | 200mm | Nature | Clean   |

## LFEET & ADAPTOR

A



| ITEM    | MATERIAL  | SPEC. | COLOR        | SURFACE  |
|---------|-----------|-------|--------------|----------|
| HQ-LF01 | AL6005-T5 | 40mm  | Silver/Black | Anodized |

B



| ITEM    | MATERIAL  | SPEC. | COLOR        | SURFACE  |
|---------|-----------|-------|--------------|----------|
| HQ-LF02 | AL6005-T5 | 40mm  | Silver/Black | Anodized |

C



| ITEM    | MATERIAL  | SPEC. | COLOR        | SURFACE  |
|---------|-----------|-------|--------------|----------|
| HQ-LF03 | AL6005-T5 | 40mm  | Silver/Black | Anodized |

D



| ITEM    | MATERIAL | SPEC.   | COLOR  | SURFACE   |
|---------|----------|---------|--------|-----------|
| HQ-MA01 | SS304    | 30x80mm | Nature | Sandblast |

E



| ITEM    | MATERIAL | SPEC.   | COLOR  | SURFACE   |
|---------|----------|---------|--------|-----------|
| HQ-MA02 | SS304    | 35x80mm | Nature | Sandblast |

## FASTENING

SCREW

1



| ITEM      | MATERIAL | SPEC. | COLOR  | SURFACE |
|-----------|----------|-------|--------|---------|
| HQ-GWST01 | SS410    | -     | Nature | Clean   |

2



| ITEM      | MATERIAL | SPEC. | COLOR  | SURFACE |
|-----------|----------|-------|--------|---------|
| HQ-ZWST01 | SS410    | -     | Nature | Clean   |

3



| ITEM      | MATERIAL | SPEC. | COLOR  | SURFACE |
|-----------|----------|-------|--------|---------|
| HQ-MMST01 | SS410    | -     | Nature | Clean   |

4



| ITEM      | MATERIAL | SPEC. | COLOR  | SURFACE |
|-----------|----------|-------|--------|---------|
| HQ-ZWST02 | SS410    | -     | Nature | Clean   |

5



| ITEM      | MATERIAL | SPEC. | COLOR  | SURFACE |
|-----------|----------|-------|--------|---------|
| HQ-SWST01 | SS410    | -     | Nature | Clean   |

## FASTENING

BOLT

A



| ITEM      | MATERIAL | SPEC. | COLOR  | SURFACE |
|-----------|----------|-------|--------|---------|
| HQ-MH01M8 | SS304    | -     | Nature | Clean   |

B



| ITEM    | MATERIAL | SPEC. | COLOR  | SURFACE |
|---------|----------|-------|--------|---------|
| HQ-SNM8 | SS304    | -     | Nature | Clean   |

C



| ITEM   | MATERIAL | SPEC. | COLOR  | SURFACE |
|--------|----------|-------|--------|---------|
| HQ-HM8 | SS304    | -     | Nature | Clean   |

D



| ITEM   | MATERIAL | SPEC. | COLOR  | SURFACE |
|--------|----------|-------|--------|---------|
| HQ-AM8 | SS304    | -     | Nature | Clean   |

E



| ITEM     | MATERIAL | SPEC. | COLOR  | SURFACE |
|----------|----------|-------|--------|---------|
| HQ-T01M8 | SS304    | -     | Nature | Clean   |

# Standard Component

## ▶ GROUNDING COMPONENT

1



| ITEM    | MATERIAL | SPEC. | WEIGHT | SURFACE |
|---------|----------|-------|--------|---------|
| HQ-GW01 | SUS304   | -     | -      | Clean   |

2



| ITEM    | MATERIAL | SPEC. | WEIGHT | SURFACE |
|---------|----------|-------|--------|---------|
| HQ-GW02 | SUS304   | -     | -      | Clean   |

3



| ITEM    | MATERIAL | SPEC. | WEIGHT | SURFACE |
|---------|----------|-------|--------|---------|
| HQ-GW03 | SUS304   | -     | -      | Clean   |

4



| ITEM    | MATERIAL | SPEC. | WEIGHT | SURFACE |
|---------|----------|-------|--------|---------|
| HQ-GW04 | SUS304   | -     | -      | Clean   |

5



| ITEM    | MATERIAL | SPEC. | WEIGHT | SURFACE |
|---------|----------|-------|--------|---------|
| HQ-GW05 | SUS304   | -     | -      | Clean   |

A



| ITEM    | MATERIAL | SPEC. | WEIGHT | SURFACE |
|---------|----------|-------|--------|---------|
| HQ-GW06 | SUS304   | -     | -      | Clean   |

B



| ITEM    | MATERIAL | SPEC. | WEIGHT | SURFACE |
|---------|----------|-------|--------|---------|
| HQ-GW07 | SUS304   | -     | -      | Clean   |

C



| ITEM    | MATERIAL | SPEC. | WEIGHT | SURFACE |
|---------|----------|-------|--------|---------|
| HQ-GW08 | SUS304   | -     | -      | Clean   |

D



| ITEM    | MATERIAL | SPEC. | WEIGHT | SURFACE |
|---------|----------|-------|--------|---------|
| HQ-GW09 | SUS304   | -     | -      | Clean   |

E



| ITEM    | MATERIAL | SPEC. | WEIGHT | SURFACE |
|---------|----------|-------|--------|---------|
| HQ-GW10 | SUS304   | -     | -      | Clean   |

## ▶ GROUNDING COMPONENT

1



| ITEM    | MATERIAL | SPEC. | WEIGHT | SURFACE |
|---------|----------|-------|--------|---------|
| HQ-CC01 | SUS304   | -     | -      | Clean   |

2



| ITEM    | MATERIAL | SPEC. | WEIGHT | SURFACE |
|---------|----------|-------|--------|---------|
| HQ-CC02 | SUS304   | -     | -      | Clean   |

3



| ITEM    | MATERIAL | SPEC. | WEIGHT | SURFACE |
|---------|----------|-------|--------|---------|
| HQ-CC03 | SUS304   | -     | -      | Clean   |

4



| ITEM    | MATERIAL | SPEC. | WEIGHT | SURFACE |
|---------|----------|-------|--------|---------|
| HQ-CC04 | SUS304   | -     | -      | Clean   |

5



| ITEM    | MATERIAL | SPEC. | WEIGHT | SURFACE |
|---------|----------|-------|--------|---------|
| HQ-CC05 | SUS304   | -     | -      | Clean   |

A



| ITEM    | MATERIAL | SPEC. | WEIGHT | SURFACE |
|---------|----------|-------|--------|---------|
| HQ-BJ01 | SUS304   | -     | -      | Clean   |

B



| ITEM    | MATERIAL | SPEC. | WEIGHT | SURFACE |
|---------|----------|-------|--------|---------|
| HQ-GP01 | SUS304   | -     | -      | Clean   |

C



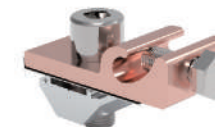
| ITEM    | MATERIAL | SPEC. | COLOR  | SURFACE |
|---------|----------|-------|--------|---------|
| HQ-GN01 | Copper   | -     | Nature | Clean   |

D



| ITEM    | MATERIAL  | SPEC. | COLOR  | SURFACE |
|---------|-----------|-------|--------|---------|
| HQ-GL01 | AL6005-T5 | 18mm  | Nature | Mill    |

E



| ITEM   | MATERIAL  | SPEC. | COLOR  | SURFACE |
|--------|-----------|-------|--------|---------|
| HQGL02 | AL6005-T5 | 18mm  | Nature | Mill    |

# Standard Component

## ▶ WASHER

1



| ITEM    | MATERIAL | SPEC. | COLOR  | SURFACE |
|---------|----------|-------|--------|---------|
| HQ-SWM8 | SS304    | -     | Nature | Clean   |

2



| ITEM      | MATERIAL | SPEC. | COLOR  | SURFACE |
|-----------|----------|-------|--------|---------|
| HQ-BWM801 | SS304    | -     | Nature | Clean   |

3



| ITEM      | MATERIAL | SPEC. | COLOR  | SURFACE |
|-----------|----------|-------|--------|---------|
| HQ-BWM802 | SS304    | -     | Nature | Clean   |

4



| ITEM      | MATERIAL | SPEC. | COLOR  | SURFACE |
|-----------|----------|-------|--------|---------|
| HQ-FWM801 | SS304    | -     | Nature | Clean   |

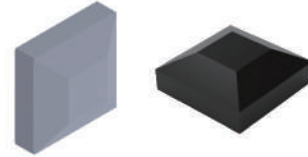
5



| ITEM      | MATERIAL | SPEC. | COLOR  | SURFACE |
|-----------|----------|-------|--------|---------|
| HQ-FWM802 | SS304    | -     | Nature | Clean   |

## ▶ END CAP

A



| ITEM  | MATERIAL | SPEC. | COLOR      | SURFACE |
|-------|----------|-------|------------|---------|
| HQ-EC | Pastic   | -     | Grey/Black | -       |

## ▶ WATER GUIDE

B



| ITEM     | MATERIAL | SPEC. | COLOR | SURFACE |
|----------|----------|-------|-------|---------|
| HQ-WPC01 | Pastic   | -     | Black | -       |

## ▶ CLEANING TOOLS

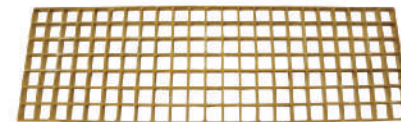
C



| ITEM   | MATERIAL | SPEC. | COLOR | SURFACE |
|--------|----------|-------|-------|---------|
| HQ-X31 | SUS304   | -     | -     | -       |

## ▶ WALK PATH

D



| ITEM    | MATERIAL | SPEC. | WEIGHT | SURFACE |
|---------|----------|-------|--------|---------|
| HQ-WK01 | FRP      | -     | -      | Grated  |

E



| ITEM    | MATERIAL | SPEC. | WEIGHT | SURFACE |
|---------|----------|-------|--------|---------|
| HQ-WK02 | Aluminum | -     | -      | Clean   |





# Photovoltaic Stents One-stop Service



**CHOOSE US**

